

PICTON HAPPENINGS

www.pictonresource.co.nz

12th April 2017

13

**Primary Schools Easter Disco,
Thurs 13th April**

All five to eleven year olds are welcome to attend the Easter Disco at Picton School Hall on York Street. Great music, glow bands for sale, dress up and remember your pocket money for the snack bar. \$2.50 entry. 6.30 pm - 8.00 pm. Primary school students only please.



25

Picton ANZAC Day Dawn Ceremony, Tues 25th April

The dawn ceremony commemorates all New Zealanders killed in war and also honours returned servicemen and women. The date itself marks the anniversary of the landing of New Zealand and Australian soldiers – the ANZACS – on the Gallipoli Peninsula in 1915. The ceremony begins at 6.00 am at Picton War Memorial.

07

**Pink Ribbon Brunch,
Sun 7th May**

In support of the New Zealand Breast Cancer Foundation a Pink Ribbon Brunch is being held at the Port Marlborough Pavilion from 9.30 am. Contact Shirley Timms on 0276 253 080 to purchase your tickets (\$35 each). Catering provided by Quest Catering, sponsored by King Salmon and Johanneshof Cellars.

SAVE THE DATE



21

**Rugby Karaoke Fundraiser,
Fri 21st April**

Help celebrate the start of the rugby season with Waitohi JAB at their karaoke night. There will be spot prizes, competitions, games, tropical cocktails (non alcoholic). This is a fundraiser for the Wranglers Youth Rugby Team travelling to Fiji in 2018. All welcome, get your grass skirt on. 6.30 pm at Port Marlborough Pavilion. \$2 entry.

28

**Kaipupu Wildlife Sanctuary Autumn Plant Sale,
Fri 28th to Sat 29th April**

Autumn Plant Sale - two huge days with a selection of native plants and some exotic "nectar" trees. All plants are grown locally by volunteers, with profits going back to Kaipupu Wildlife Sanctuary. Become a "good neighbour" and provide some habitat and food for native birds, invertebrates and lizards in your own garden. Mariners Mall 9.00 am till 5.00 pm.



10.00am - 1.00pm
weekdays



Mariners Mall
Picton 7220



03 573 7790



prcentre@extra.co.nz



www.pictonresource.co.nz



[www.facebook.com/
Picton-Resource-Centre](https://www.facebook.com/Picton-Resource-Centre)

Waikawa Bay School Kaitiaki Group

Hi,

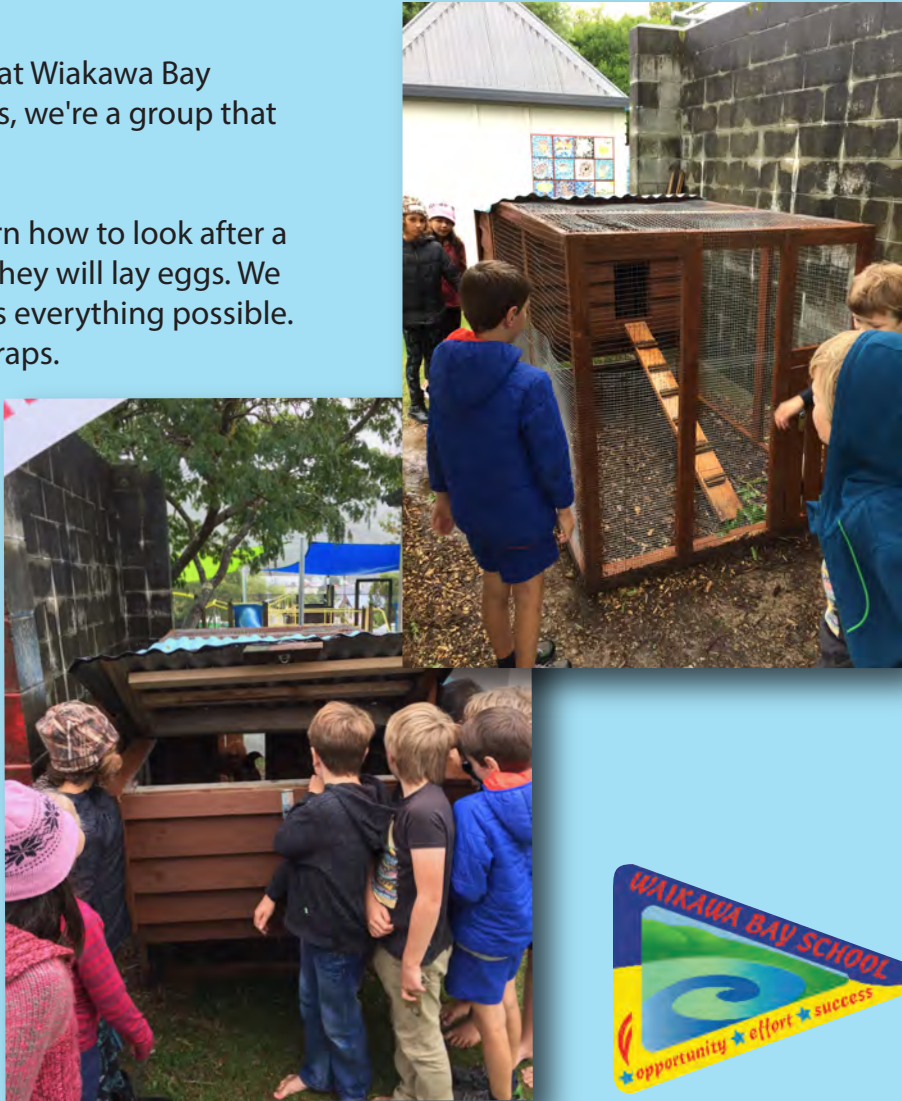
We're part of the newly established kaitiaki group at Wiakawa Bay School. If you don't know what the kaitiaki group is, we're a group that helps the environment stay healthy.

We've started by getting chickens so we could learn how to look after a live animal and keep them happy. We are hoping they will lay eggs. We think they will because Waikawa Bay School makes everything possible. They're also a great way to get rid of some food scraps.

We are part of the Enviroschools and already have our Bronze Enviroschool Award and we've set the goal of working towards our Silver this year. To achieve that we are doing environmental projects around the school. We try to keep the trees green by not littering and not allowing people to snap branches. Every year we do environmental electives to keep the school looking sharp, this includes the whole school.

We also have Edible Gardens, which we grow fruit and vegetables in. Every year we have sessions in the gardens. We have watermelons, beans and sunflowers as tall as a person! We find the garden sessions fun.

By Tere-Ariki and Shackleton



Cruise Ship Arrivals 2017

Date	Times	Ship	Pax	Berth
21 Apr	10:00 – 21:00	Radiance of the Seas	2,500	Waimahara

2016/2017 Cruise ship season ends



Senior's Community Transport Service

NZ Red Cross Marlborough, along with Age Concern have joined together to provide transport from Picton into Blenheim, on a fortnightly basis.

If you are over 65 and are having a problem getting into Blenheim, phone Age Concern, 579 3457 for more details. Conditions apply.

- The transport will leave from the Picton library on the 1st and 3rd Wednesday of the month, at 10.30 am.
- The Blenheim drop off and pick up area will be outside the library.
- The transport will leave Blenheim at 2 pm (sharp).
- Numbers will be limited.
- Consent forms will need to be completed before acceptance on the scheme.

FREE PRINTER

We have a printer available free of charge. You must be a not-for-profit community group to receive it. First come first served.



Pick up from Picton Resource Centre, please bring proof of your community group status.



We are fundraising for our Youth Rugby Team.

Have a clear out at home and see what you find, we are collecting the below items only **not** general scrap and white ware etc.

Please take items to Crafar Crouch Picton Yard.

Contact Joe on 02040298364 if you need more info

Stainless Steel



PICTON DAWN CHORUS

Vandalism an Added Challenge for Wildlife Recovery Efforts



www.pictondawnchorus.co.nz
Email: pictondawnchorus@gmail.com

By Siobain Browning (PDC Coordinator)

Picton Dawn Chorus trap-line monitors have been hurt by the vandalism of traps, newly set up on the Essons Valley track to Barnes Dam. On a recent monitoring trip, trap monitors discovered 13 of the 17 boxed rat traps removed from their positions and many tossed into the adjacent stream.

“This activity is very distressing to volunteers and members”, said James Wilson, chairman of the Picton Dawn Chorus Society, “Our objective is to achieve a predator free Picton for the sake of the native birds and to make Picton a more beautiful town to live in. We don’t need a distraction like this”.

The challenge has been thrown down to make Picton the first predator free town in New Zealand. To achieve this, traps are being placed throughout the town and in the surrounding bush to remove rats, stoats and possums. The volunteers, who go out each weekend checking the bush traps, will now have to trudge out to set up the Barnes Dam trap line again.

All other trap lines, set over Victoria Domain and in Essons Valley and those in town are successfully killing predators. The project is also working to set up systematic urban trapping in back gardens. Thanks to a grant from Kiwibank subsidised traps have been placed in over 50 gardens. One urban trapper has dispatched 12 rats in recent months.

The present tally of removed predators is 237 rats, 177 mice, 182 possums and 1 weasel.

Siobain Browning, Project Coordinator, has requested that anyone walking on tracks in Essons Valley who sees damage done to PDC traps to give her a call on 021 285 1858 or report an event to the police.

A short film projecting the objectives of Picton Dawn Chorus can be seen here <http://www.pictondawnchorus.nz/about.html>



Volunteers placing the traps



Vandalised trap

PICTON'S GREEN SCENE

Tip: Stay clear of plastic water bottles. They can leach toxins into your drinking water, especially if they heat up or get older. Use tap water. Ask for a stainless water bottle for your birthday. There is a small movie called The Story of Bottled Water. Just go to You Tube. Everyone should watch this.



Would you like to contribute?

Email Linda your tips for a sustainable lifestyle to plasticbagfreepicton@gmail.com.

Brought to you by Linda Thompson of Plastic Bag Free Picton and Picton Smart & Connected Environment working group.



Picton Smart and Connected

Linking up for a stronger community



Picton Smart & Connected is a team of passionate volunteers promoting a collaborative approach, with the focus on community interest. We want to tackle the issues and develop the opportunities relevant to Picton (& Waikawa), and especially build a coherent community voice when dealing with key regional stakeholders and the MDC. Sometimes that's a long game - with a lot of work behind the scenes before the results are evident - like the Marina to Marina track project.

MARINA TO MARINA TRACK: It's fantastic to see 18 months of planning become a reality, for a track designed for everyone from school children to senior citizens, fitness walkers, young parents with baby buggies, the list goes on! Our Bike Walk Picton working group led by Jill Evans has negotiated, submitted to council, linked key people up, appealed to the generosity of contractors, and won the day with the first stage now completed. A huge thank you to Crafer Crouch for their work and generosity to the project. BWP is also working on other projects to make Picton-Waikawa more bike walk friendly and link with regional tracks and plans.



Anna Frisken (PS&C Youth Rep)

SIR PETER BLAKE YOUTH ENVIROLEADERS FORUM: Congratulations to our Youth Rep Anna Frisken who has been awarded a place at the Sir Peter Blake Youth Enviroleaders Forum (YELF). From over 500 applications 55 secondary school students passionate about the environment will travel to Auckland in April. They will have the opportunity to address topical environmental issues facing our country, and develop strategies to address them. YELF 2017 will focus on different environmental issues related to our oceans. By working with other up and coming youth environmental leaders, they will leave YELF fired up, with improved leadership capabilities, inspired and ready to create change. We look forward to Anna implementing those strategies right here in Picton.

YOUTH SURVEY: Anna Frisken is conducting a survey of Picton youth to find out what they would like to see developed in our town and how PS & C can support them. One initiative she is looking at is the idea of a 'Drop-In-Centre' with table tennis, foosball, WiFi etc. Mention it to your young person and please encourage them to use their voice and complete the survey when they receive it. Follow the Picton Smart and Connected Facebook page to keep up to date on the Youth Survey and other news.

SUBMISSIONS TO THE MDC ANNUAL PLAN: Marlborough District Council has opened the annual plan for consultation (see below for dates), it's available via their website or at the library. PS&C will submit on key issues and initiatives. If you are making a submission and would like support, or some assistance, or suggestions on who to contact, please email us. Dates to remember: Submissions open: 6th April 2017, Submissions close: 10th May 2017, Hearing dates: 6th - 8th June 2017.

HERITAGE AND CULTURE WORKING GROUP: Our Steering Group has identified the need to create a new working group Heritage & Culture. The aim of this group will be to connect and champion projects that promote Picton's culture and heritage. If you have an interest in this area, please visit our website for more information or email us.

RECYCLING AT PICTON MARINA: Recycling has been withdrawn and wheelie bins are replacing the large blue bin at Picton Marina. The blue bin were installed as part of a trial. Unfortunately with people leaving rubbish stacked next to the bin, and the noise and odour from the dumping, has prompted the Council to replace them with wheelie bins. PS&C are continuing the dialogue with Council around trials of rubbish disposal in Picton as we know the community wants recycling. We will report back soon.

KEEN TO BE INVOLVED? Our working groups involve about 70 volunteers - including Bike Walk Picton, Public Space & Environment, Visitor Economy, Freedomn Camping, Library and Communications. New working group volunteers are welcome - main criteria are enthusiasms and commitment - all skills and networks appreciated! Visit our website or email us. Plus, sign up for our email newsletter including reports from monthly Steering Group meetings.

Email: We are in the process of setting up a new email address, in the mean time email Picton Smart & Connected C/O of prcentre@xtra.co.nz

Website: www.pictonsmartandconnected.co.nz

www.facebook.com/pictonsmartandconnected or www.facebook.com/PictonMyPlace

QUEEN CHARLOTTE YACHT CLUB

420 college Team sailing 'Top of the South' regional regatta at QCYC – Picton – 30 March to 1 April

A record number of college sailing teams competed in Picton Harbour last Thursday to Saturday. Fourteen teams in total from as far as Christchurch and Mt Aspiring competed in the Top of the South regionals and overall champion. The local teams were represented by Marlborough Girls, Marlborough Boys and Queen Charlotte College. The last couple of years the title has been shifting from MBC to QCC.

Day 1

Eighteen 420 yachts were checked and all teams weighed in. Then it was a long wait as the wind did not fill in till the afternoon. Racing started around 1 pm. In each race three boats with two crew each sail against three boats from the other team on a short S- shaped course. By superb boat handling skills and tactics each team tries to force penalties on each other. The first boat finished gets 1 point, the second boat 2 point etc. Once all boats are finished the race, the overall score of the team counts. So any team score 10 or less – wins. After day 1 the majority of the races in the first round Robin were completed. MBC and QCC showing their strength by not losing any races.

Day 2

The wind came up again late morning and the first Round Robin was completed with QCC coming out on top. Only just ahead of Marlborough boys with Mt Aspiring not too far behind. The fleets were divided into Gold and Silver fleets and another Round Robin started.

Day 3

The day started out with light patchy wind condition. During the day wind strength increased and became gusty around the time the first Round Robins in the gold and silver fleets were completed. The silver fleet was sent ashore while the Gold fleet completed the 2nd Round Robin with big smiles on their faces.



FINAL PLACINGS

Gold Fleet

1. Marlborough Boys College
2. Queen Charlotte College
3. Mt Aspiring College
4. Christchurch Boys High School
5. Nelson College Boys 1
6. Waimea College
7. Motueka High School

Silver Fleet

1. Nayland College
2. Nelson College Girls
3. St Andrew's College
4. Nelson College Boys 2`
5. Marlborough Girls college
6. Christ College
7. Mt Aspiring/Otago Girls Combined

Overall winner: Marlborough Boys College

Silver fleet winner: Nayland College

Top of the South Trophy (Marlborough v Nelson): Marlborough

Highest placed Nelson Team: Nelson Boys 1

Best Girls team: Nelson Girls

Top Image: 0141a Marlborough Girls First win –Maggie Lane Left and Maeve Dunkerley

Bottom Image: QCC Left to right Harry Edwards, Alice Overend (S), Ryley Thom, Giovanna Burtenshaw, Agost Radzik, Emily Overend (S), Jasper Hopkins (S)

Story by Christel Hopkins

Images Lamirana Photography

MARLBOROUGH DISTRICT COUNCIL

Picton Walking and Biking Developments

Fabulous views over Picton and Queen Charlotte Sound and so close to the water that you can wave to passengers on the ferries – that is what’s on offer to cyclists taking the new Kanuka Mountainbike Trail to the end of The Snout.

The newly completed 3.8 km two-way, Grade 2 (Intermediate) trail is on the sunny western side of the Snout peninsula; about 200 metres from the tip of the Snout it joins up with the Snout Walking Track.

It’s the latest partnership effort from the local mountainbiking community, Bike Walk Marlborough and Council. Chris Mildon, Tasman Trails Ltd, has excavated the new trail along with Picton Trails volunteers who have donated labour and materials to further expand Marlborough’s mountainbiking network.

An official opening and ribbon cutting took place on Sunday 2 April but already mountainbikers are enjoying the new trail option.



Progress is being made with the upgrade to the track running between the marinas in Picton and at Waikawa.

Picton’s Smart & Connected Steering Group spearheaded these improvements after overwhelming support at earlier public meetings and secured funding of \$30,000 from the Marlborough District Council’s annual plan last year. Group chairwoman Jill Evans also brokered support from contractor Crafar Crouch Construction who has provided manpower and materials at a discounted rate.

Two short sections of the track have been recently completed; Lincoln Street to Sussex Street and Leicester Street to Endeavour Park. Upgrade of further sections is planned including completion of a formed track through Endeavour Park as funding permits.

The track is used by commuters, college students and others travelling to town as well as for recreation and fitness.

The track is also used by Picton’s many visitors and provides an excellent return circuit as connects with other Victoria Domain tracks.

Picton’s planned new Wayfinding will assist locals and visitors to find this track and other key destinations within and around Picton. Existing track information panels within Victoria Domain will also be replaced using the updated maps.

Picton Library and Council Service Centre
67 High Street, Picton 7220,
Telephone: 03 520 7493 Fax: 03 520



PICTON RESOURCE CENTRE

2017 Donations

Thank you to the following businesses and community groups who have shown their support by donating to the Picton Resource Centre:

- | | | |
|----------------------------------|-------------------------|----------------------------|
| Atlantis Backpackers | Picton Little Theatre | Port Marlborough |
| Crow Tavern | Picton Mens Shed | Queen Charlotte Probus |
| Fresh Choice Picton | Picton Poets | Seumus Irish Bar |
| Harcourts Picton | Picton Rotary Club | Society of Model Engineers |
| Kaipupu Wildlife Sanctuary | Picton RSA | St. Vincent de Paul |
| Karaka Wood Gallery | Picton Poets | Take Note Picton |
| Picton Badminton Club | Picton Rotary Club | Tombstone Backpackers |
| Picton Bowling Club | Picton RSA | Top 10 Holiday Park |
| Picton Dental Spa | Picton Seaport Trust | Union Parish Church |
| Picton Garden Club | Picton Table Tennis | Waitohi Rugby Club |
| Picton Healthcare Pharmacy | Picton Wine Club | Writers of Picton |
| Picton Heritage & Whaling Museum | Picton Womens Institute | |

THANK YOU



By Helen Devlin

With the end of the school term almost here library staff are busy preparing for the Easter break and school holiday programme – I don't know where those first three months of the year went!

Book in for the special School Holiday programmes:

Wednesday 19 April 2.30 pm – 3.30 pm

Book Chat – a fun, book club style hour. Share great reading adventures with Lynnaire. Bring in your favourite library reads and chat about books together. Plus small book-y craft and afternoon tea provided.

Thursday 20th April 2.30 pm – 3.30 pm

Sock Bunnies - Make your own little Easter rabbit

Wednesday 26 April 2.30 pm – 3.30 pm

Book Chat – as above

Thursday 27th April 2.30 pm – 3.30 pm

Autumn Tree – Paint and sculpting fun

Friday 28 April 10.30 am -11.30 am

Under 5's Story and Craft

All welcome and it's free. We appreciate booking in advance so that we have an idea of numbers. Telephone 03 520 7493 Picton Library or email pictonlibrary@marlborough.govt.nz.

Leza Lowitz - author talk at Blenheim Library 20 April 7.30pm

The Friends of Marlborough District Libraries invite you to an evening with Leza Lowitz. Leza is an American expatriate writer and yoga instructor residing in Tokyo. She will discuss "Hope and Community" in reference to the March 11, 2011 earthquake and tsunami in Japan, on which she based her novel Up from the sea. Her book tells the story of one teenage boy and how he survives the tsunami that devastates his coastal village.

Public holidays – Library & Service Centre Hours

Good Friday April 14	Library & Service Centre closed
Saturday April 15	Library open
Sunday April 16	Library & Service Centre closed
Easter Monday April 17	Library & Service Centre closed
Tuesday April 18	Normal hours resume
Anzac Day Tuesday April 25	Library & Service Centre closed

What's on?

Tuesdays	10.30	Picton spinners and Knitters
Wednesday 12 April	10.30	BookChat
Thursday 20 April	7.30pm	Author Leza Lowitz at Blenheim Library

KIDS GO FREE

April School Holidays

Friday 14th April - Sunday 30 April

Book now: office@mailboat.co.nz (03) 573 6175

*Children under the age of 14. T&C apply

Beachcomber
CRUISES PICTON
FAMILY OWNED AND OPERATED

www.beachcombercruises.co.nz



Picton Churches Easter Services All Welcome

Thursday:

Holy Trinity Picton

(opp. Nelson Square)

Reflective Holy Communion Service 7.30 pm

Catholic

(cnr Auckland & Otago St)

Last Supper Mass 7.00 pm

Good Friday:

Holy Trinity Picton

Service 10.00 am

Baptist

(293 Waikawa Rd)

10.00 am

Catholic

Passion of Our Lord 3.00 pm

Saturday:

Catholic

Easter Vigil 7.00 pm

Easter Sunday:

Holy Trinity Picton

Service 9.00 am & 10.30 am

St John in the Wilderness

(Koromiko)

6.30 pm

Baptist

10.00 am

Catholic

Easter Day 9.00 am

Christian Life Centre & Union Parish

(40 Broadway) Combined Service 10.30 am

Action Christian Centre

(Holy Trinity Hall, Nelson Square) Service 5.30 pm

Combined Churches Events:

Good Friday – meet Holy Trinity to process the Cross around Picton 11.30 am

Easter Sunday – Sunrise Service in the Domain at Lookout – (entrance off Suffolk Street) 7.00 am

Picton Courses

1ST AID

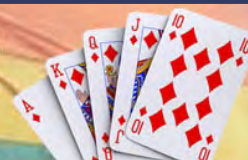
course at Picton Fire Station on **Friday 28th April**. Starts 8.30am.

Visa/Mastercard accepted.
(Rural subsidies available)

NZQA rated, renew or full first aid at work courses. Fun & fast.
Call Nine Scott on 0800 9347837 or email
nine@tripleonecare.co.nz



BRIDGE LESSONS



LEARN TO PLAY BRIDGE

Picton Bridge Club is pleased to offer beginners's bridge lessons starting on Monday 24th April, 2017 and running until Monday 26th June.

The course is ideal for absolute beginners, or those who learnt bridge some time ago and would like a refresher before returning to bridge.

The 10 week course costs \$30 and includes your 2017 subscription to Picton Bridge Club (\$25 value). Lessons will be on Monday evenings in Waikawa, Picton.

For more information and to confirm you place call
Keith on 573 9170 or
Jennifer on 573 8313

Wednesday's, 6.30pm, Picton School Hall,
Starts 12th April
\$10 casual or 10 class concession card for \$80
PLUS your 1st class is FREE



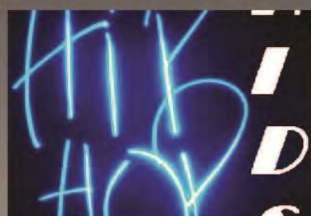
FDF

FLEUR'S DANCE FITNESS

YAY PICTON KONGA IS HERE!!

Konga is an easy to follow, high intensity fusion of boxing, cardio, dance & sculpting, expect to squat, shake & sweat to the hottest beats. Whether you are totally fit or totally uncoordinated KONGA is for you.

Contact: Fleur 021 2576 555 or
fleurhebbard@live.com.au



HIP HOP IS HERE!!

Come & try my **FREE DEMONSTRATION CLASS** & enroll your child in a fun 6 week session of Hip Hop for only \$60..

11th May, 3.30pm @ Endeavour Park Pavilion

HIP HOP CLASSES START the following week

18th May, 3.30pm @ Endeavour Park Pavilion

Contact: Fleur 021 2576 555 or fleurhebbard@live.com.au

FDF

FLEUR'S DANCE FITNESS

Volunteer



PICTON HERITAGE & WHALING MUSEUM

would like to have more volunteers
1 session of 3 hours per month

HELP TO PRESENT OUR HISTORY

Phone 573 8283 or call in at 9 London Quay

Marlborough St John needs more volunteers

Join us. It could change your life, and save someone else's.

Being a St John volunteer on an ambulance could be just what you're looking for. Working with a dedicated team, learning new skills and giving something valuable back to your community can be incredibly rewarding. It can also lead to career opportunities for some volunteers.

Contact us today to start your exciting career with St John!

For more information contact:

Anne Parker, Area Executive Officer, 578 0797, email
anne.parker@stjohn.org.nz or visit join.stjohn.org.nz (job code 23779)



PICTON WEEKLY EVENTS

MONDAY

Tai Chi: 8.00 am, Jade Lodge, 37-41 Auckland St
Picton Walking Group: 9.30 am, Picton RSA carpark
Tumble Tots: 10.30 am, Port Marlborough Pavilion
Writers of Picton: 1st Mon of month, time & location vary
Senior Citizens: 1.00 pm onwards, Picton RSA
Junior Badminton: 3.15 – 4.30 pm onwards, QCC Gym
Arapawa Boxing Club: 5.30 – 6.15 pm, Picton Scout Hall
Girl Guides: 6.00 – 8.00 pm, St. Josephs School
Sounds Accordionaires: 7.00 – 8.30 pm, 62 Moana View

TUESDAY

Tai Chi: 8.00 am, Jade Lodge, 37 - 41 Auckland St
Yin Yoga: 8.30 - 9.45 am, Port Marlborough Pavilion
St. Joseph's Catholic Church: Mass 9.00 am
Picton Playcentre: 9.30am - Noon, 5 Waitohi Place
Picton Newcomers Network: 1st & 3rd Tues of month 10.00 - 11.30 am, Seabreeze Café
Table Tennis: 10.00 am– Noon, Picton Little Theatre
Spinners and Knitters: 10.30 am, Picton Library
Picton Women's Institute: 1st Tues of month, 12.00 – 3.00 pm, Anglican Church Hall
Tasty Cooking Club: 3.30 – 4.30 pm, Picton Library
Aikido Adult Classes: 6.00 pm, Port Marlborough Pavilion
Picton Yoga With Kate: 6.00 – 7.00 pm, QCC
Housie: 7.00 pm, Picton RSA
Senior Badminton: 7.00 pm onwards, QCC Gym

WEDNESDAY

Tai Chi: 8.00 am, Jade Lodge, 37-41 Auckland St
St. Joseph's Catholic Church: Mass 9.00 am
Picton Men's Shed: 9.00 am – 4.00 pm, Men's Shed
Anglican (Holy Trinity) Church: Service 10.00 am, 38 York St
Weightwatchers: 10.00 am, St Joseph's School
QC Fellowship Club: 2nd Weds of month, 10.00 am, Port Marlborough Pavilion
Picton Poets: 3rd Weds of month, 10.30 am, Picton Library
Picton Bowling Club: 12.45 pm, 25 Kent Street
Brownies: 5.00 – 6.30 pm, St. Josephs School
Arapawa Boxing Club: 5.30 – 6.15 pm, Picton Scout Hall
Dance Fit: 6.00 – 7.00 pm, Port Marlborough Pavilion
Picton Mountain Bike Club: 6.15 pm, Meet at Port Marlborough Pavilion
Picton Lions (Tea): 6.30 pm, The Barn, 1st Weds of the month
Picton Lions (Committee): 6.30 pm, Port Marlborough Pavilion, 3rd Weds of the month
Konga: 6.30 pm, Picton School Hall
Indoor Bowls: 7.00 pm, Port Marlborough Pavilion
Quiz Nights: 7.30 pm, Picton RSA & Club
Scottish Country Dancing: 7.30 pm, Picton Little Theatre

THURSDAY

Tai Chi: 8.00 am, Jade Lodge, 37-41 Auckland St
St. Joseph's Catholic Church: Exposition 11.00-12.00 pm
Union Parish Op Shop: 9.00 am – 2.00 pm, 40 Broadway
Picton Playcentre: 9.30am - Noon, 5 Waitohi Place
Mainly Music: 9.30 – 10.45 am, Picton Anglican Church
Senior Net Workshop: 10.00 am 3rd Thurs of month, Library
Table Tennis Club: 10.00 – Noon, Port Marlborough Pavilion
Grey Power: 3rd Thurs of month, 1.30 – 3.30pm, Picton RSA,
Pottery: 1.00 – 3.00pm, Essons Valley Art & Craft
Cribbage: 1.30 – 4.00 pm, Marina Cove Club Room
Aikido Children's Class: 5.00 pm, Port Marlborough Pavilion
Aikido Adult Class: 6.00 pm, Port Marlborough Pavilion
Yurt Yoga at Mount Pleasant: 6.00 – 7.30 pm, Yoga Yurt
Picton Yoga With Kate: 6.00 – 7.00 pm, QCC
Aikido Adult Classes: 6.00 pm, Port Marlborough Pavilion,
Sounds Orchestral Ukelele Group (S.O.U.P.): 6.30 pm, Marina Cove Club Room
Bridge Club: 6.45 pm, Union Parish Church Hall

FRIDAY

Tai Chi: 8.00 am, Jade Lodge, 37-41 Auckland St
Picton Pav Yoga: 9.15 – 10.30 am, Port Marlborough Pavilion
Picton Amateur Art Group: 10.00 am – 3.00pm, Picton RSA
Under 5's Stories & Craft: 10.30 am, Picton Library
Welcome In: 1st Fri of month, 11.00 am, Wave Café
Picton Newcomers Network: 5.00-6.00 pm, Seabeeze Café
Picton Wine Club: 6.15 pm, Picton Little Theatre, 1st Fri of the month

SATURDAY

Tai Chi: 8.00 am, Jade Lodge, 37-41 Auckland St
Junior Football, Rugby & Cricket: 9.00am onwards, Port Marlborough Pavilion
Picton Men's Shed: 10.00 am – 1.00 pm, 8 Wairau Road
Picton Bowling Club: 12.45 pm, 25 Kent St
St. Joseph's Catholic Church: Vigil Mass 6.00 pm

SUNDAY

Tai Chi: 8.00 am, Jade Lodge, 37-41 Auckland St
Anglican (Holy Trinity) Church: Service 9.00 & 10.30 am
St. Joseph's Catholic Church: Mass 9.00 am
Union Parish of Picton: Service 10.00 am
Picton Baptist Church: Service 10.00 am
Buddhism for Daily Life (Marlborough Group): 1st Sun of month, 10.00 am, 8 Moana View Rd
St. John in the Wilderness Koromiko: 6.30pm (2nd & 4th Sundays of month)

For more information on any of the events listed here visit
www.pictonresource.co.nz/community-directory

If you would like to add an event to this listing or make an amendment please contact the Resource Centre on 03 573 7790 or email prcentre@xtra.co.nz.