

PICTON HAPPENINGS

www.pictonresource.co.nz

15th November 2017

16

Conservation Dogs in Action, 4.00pm Thurs 16th Nov

Join Conservation Kids NZ and DOC's conservation dog team and see doggy rangers in action. From sniffing out kiwi to sleuthing pests, conservation dogs are an important part of the team. Hear the handler describe how they go about their work and see the dogs in action. Meet at the Picton foreshore by the war memorial steps for a 4.00 pm start. Please register by emailing conservationkids@hotmail.co.nz.

18

Weedy Working Bee, 9.30am Sat 18th Nov

Kaipupu Wildlife Sanctuary is holding a weedy working bee on Saturday 18th of November from 9.30am till 1.30pm. If you are keen to head along and help identify weeds at the Sanctuary then please get in touch with Rachel on 027 692 3488. They are not ashamed to use bribery either and there will be a BBQ lunch.

27

Picton Foodbank Drive, 6.30pm Mon 27th Nov

Listen out for the fire engine sirens on your street and be ready with your non perishable goods. 6.30 pm onward.

25

Fire in the Meth Lab, 7.30pm Sat 25th Nov

Australian comedian and storyteller Jon Bennett has landed in New Zealand and is touring his insane and incredible Fire in the Meth Lab. Jon is a multi-award winning performer and his stories are meaningful, bizarre, hilarious and true. Fire in the Meth Lab is a shocking and chaotic story of drug dealers, bikers, high-speed car chases, fights, crime, prison, vomit, exploding houses, and even cancer. The show also explores brotherly relationships and how siblings with the same upbringing can choose very separate paths with charismatic hilarity and heart-warming, poignant reflection. 7.30 pm - 9.00 pm, Picton Little Theatre. Tickets are \$15 from EventFinda or there is \$20 cash door sales also available.

30

Seals and Dolphins and Whales ... Oh My! 7.00pm Thurs 30th Nov

Join Marine Zoologist & Wildlife Photographer Ailie Suzuki as she introduces us to the different marine mammal species of the Marlborough Sounds. See actual footage and photographs taken right here on our back door step. Be inspired by these amazing mammals and learn how you can help protect them. 7.00 pm - 8.30 pm, Envirohub, 3 Auckland Street, Picton. Bookings are essential, email info@envirohub.co.nz.

18

Lochmara Lodge Half Marathon, Sat 18th Nov

The 3rd Lochmara Lodge Half Marathon in aid of the Bread of Life Foundation will begin with an early cruise out from Picton to the Anakiwa start line. The course is standout beautiful as you run or walk on a journey through paradise. If you are a bit slow or want to do the half at a brisk walk you will start 30 minutes before the "guns of the runs". You will be timed and you will have the same opportunities to win spot prizes as everyone on the adventure. The podium will be there to celebrate the success of the speed bunnies. For more info visit www.lochmaralodgehalf-marathon.com. Please note this event is now sold out.



10.00am - 1.00pm weekdays



Mariners Mall
Picton 7220



03 573 7790



prcentre@extra.co.nz



www.pictonresource.co.nz



[www.facebook.com/
Picton-Resource-Centre](https://www.facebook.com/Picton-Resource-Centre)

Picton Dawn Chorus

Picton Dawn Chorus teams up with The Urban Rat Project



www.pictondawnchorus.nz

Email: info@pictondawnchorus.nz

By Siobain Browning, PDC Coordinator

An important aspect of becoming predator free is knowing where trapping is going on and how much and what is being caught. To do this, we have been relying on trappers submitting their catch data through a form on our website (www.pictondawnchorus.nz). However, we have just partnered up with The Urban Rat Project to improve our data collection method.

All our registered trappers will now receive regular reminders to submit their reports – whether they have caught something or not! This is important because we also need to know where predators are not being caught. The reminder includes relevant local stories and tips about trapping. It just takes a few seconds to file a report and trappers receive information about trapping and catches in their neighbourhood (without showing any private information or exact locations). Catch reports are not just for rats but also for mice, possums, mustelids and hedgehogs.

Although Picton Dawn Chorus has chosen to use toxin free methods, the Urban Rat Project does allow bait stations to be included in the data monitoring.

Anyone can join the movement, so please sign up to begin filing your catch reports. Go to www.ratproject.org to find out more and help make Picton Predator Free.



THE URBAN RAT PROJECT

Picton Dawn Chorus Catch status per 08/11/17

| | |
|-----------|-----|
| Rats | 735 |
| Mice | 660 |
| Stoats | 1 |
| Weasels | 2 |
| Possums | 381 |
| Hedgehogs | 45 |

Youth in Emergency Services

Marlborough Youth Trust has the “YES” (Youth Emergency Services) programme applications open now for youth aged 16-20 years of age. If you have an interest to learn about roles within various emergency services like the Police, Land Search and Rescue, Fire, Coastguard, Civil Defence, and Surf Life Saving consider applying to be on this 8 week programme.

This course is running from the 1st Feb- 12 April 2018, Thursday evenings will be a theory night and Saturday morning will be practical experience with each different service. The programme finishes with an overnight emergency scenario. There is a requirement to volunteer into a sector of your interest for up to 20 hours, to be able to graduate from this programme. Check out www.myt.org.nz for more information and pop your application into the Marlborough Youth Trust office.



Above: YES Class of 2017 at the overnight scenario

Queen Charlotte College



Queen Charlotte College

An amazing experience that I wouldn't of had otherwise

By Hallie Graham (below)



From the 3rd of October to the 11th, a handful of ecstatic QCC students travelled abroad to the gorgeous utopia of Hawaii. This Social Sciences trip was led by our own Geography teacher, Mrs Tyrrell. The group saw many sights such as Pearl Harbour, the Dole Plantation, He'eia State Park; they went on the Diamond Head track and much more.

After interviewing Stacey Pope, a student from the 2017 Hawaii trip, I gained some insight on the extraordinary opportunity.

It all started last year, when the new trip popped up in the notices asking for eager students to apply. This is when Stacey made the decision to jump aboard... all the way to the middle of the Pacific Ocean! She realized it would be 'an amazing experience that I wouldn't of had otherwise'. But, before the tickets were booked and suitcases were packed, she was just slightly short a mere \$3,000... Let the fundraisers begin!

With amazing help from our community, the group was involved in fundraisers such as the Fashion Show/Auction, catering at Momorangi Bay, chocolate sales, the Mussel Festival, supper for the Mai Tohi production and Pink Shirt Day pancakes. These fundraisers helped out the community while granting the group sufficient funds (on top of their own part time jobs!), and allowed them to enhance their education in geography and history in a unique and most memorable way.

The group included 9 QCC students, Mrs Tyrrell and two parents. They departed New Zealand on October the 3rd for the trip of a lifetime. First stop was Waikiki Beach and to hit up the Ala Moana shopping centre to spend their carefully earned money. Over the next six days they got the opportunity to see the Pearl Harbour museum and USS Bowfin; had a full day island tour, went snorkelling with some turtles; saw the He'eia National Park, and headed up Diamond Head track, seeing the unbelievable lookout over the city. Stacey, on her free day, went on an expedition over to the 'Big Island', officially called Hawaii, there she saw some of the active volcanoes situated on this island. Others on their free days went to the Honolulu Zoo and did some shopping at the Ala Moana shopping centre.

The trip came with its fair share of memories, including Stacey's favourite where she got to learn how to surf in the 'very, very hot' weather (over 30 degrees every day). But, she recalls, the best part of the trip were all the little things she got to experience such as eating 'American' ice cream and 'chilling' with cool people. Having said that, she did struggle with not yelling at everyone as a result of the heat and tiredness. Her advice for students like herself, wanting to go to Hawaii or similar trips is to firstly put on 'lots and lots' of sunscreen, not to go to sleep at 2am (for the sake of the group), not to sweat the small things and most importantly, to have fun!

Cont'd...



Top: Boarding the plane

Middle: Waikiki, the view from Diamond Head

Bottom: Pearl Harbor

cont'd...

This amazing trip only went ahead because of Mrs Tyrrell's amazing organization, but also from the tremendous support and contribution from our community. It sounded like an extraordinary experience, which I've only heard positive comments about. Without the community's support these trips wouldn't be possible, you all deserve a huge thank you and to know that your contribution is highly appreciated.

Left to Right: Standing - Siris Allot, Susan O'Rourke (Parent Helper), Paris Forbes (Parent Helper), Liberty Forbes, Maddi Anderson, Gabby Tait, Gemma O'Rourke, Jack McDonald, Stacey Pope, Georgie Lightfoot. Kneeling - Jacqui Tyrrell (Group Leader), Agost Radzik



Waikawa Bay School

Ahuareka 2017



On Thursday 2nd of November 2017 the schools of Picton gathered together to perform at the Ahuareka Festival at Queen Charlotte College. There were six schools who performed on the stage including Picton School, Waikawa Bay School, Queen Charlotte College, Picton Kindy and the Picton Early Learning Centre.

We had to meet at QCC in our kapa haka uniforms at 4.45 p.m and we waited for our turn which was after Picton School, and both of the preschools. Finally it was our turn to go on... we sang E Ihowa, E Minaka Ana, Waikawa te Kura, Tika Tonu (haka) and Tai Aroha.

After we performed we watched all the other performances. Even though there was a big (and I mean BIG) table of food at the start, when we finished there was nothing but water left. The evening was awesome!!!

By Lajah & Sofia



Picton Rail and Sail

Lifetime Membership awarded to volunteers

In mid-October Picton Rail and Sail celebrated their 50th birthday. As part of the celebrations the Mayor of Marlborough presented two Lifetime Memberships to volunteers Gary Coburn and Kerry Johnson. Here we celebrate their work and dedication to this iconic Picton attraction.

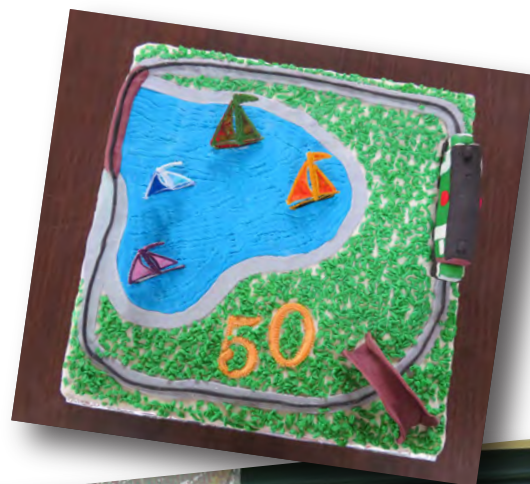
Gary Coburn

1. Gary was the first President of Picton Model Engineers from 1967-1976. In early 1967 Blenheim Model Engineers had to move out of their premises at the Blenheim Show grounds and were offered a lease by the Council on the foreshore. Gary and a few others thought it was too good an opportunity to let pass by.
2. On Sunday 10th September 1967 at a meeting held at Gary's home the Picton Society of Model Engineers was born.
3. Gary and a band of likeminded people began the preparations for the first layout of the track for running their engines and the excavation of a pond for sailing their model boats.
4. Gary and the volunteers were fundraising (selling scrap metal) as well as landscaping, if you look around you will see some very large rocks which Gary and his helpers managed to man handle in to place.
5. Unfortunately Gary received a promotion in his job and moved away for the area so his services were lost in 1976.
6. Fifty years on it seems fitting that Gary is recognised for his foresight in leading a team to create the forerunner to the layout we have in Picton today.

Kerry Johnson

1. Kerry joined in 2003 and has been a member for 14 years.
2. Kerry worked for DOC and during that time honed his carpentry and organisational skills.
3. He probably thought that (like the rest of the volunteers) that he was joining to drive the train.
4. It wasn't long before things needed to be done around the area and Kerry stepped up.
5. Looking around Picton Rail and Sail much of what you see today has got Kerry's fingerprints on it.
6. Kerry worked on the refurbishment of the pool and the fence extensions a few years ago; Any problems with the filtration plant – see Kerry, the pool is dirty or needs painting – see Kerry, Kerry and his band of merry helpers will put things right.
7. During the track replacement Kerry was responsible for taking all the old sleepers off the piles, keeping tabs on them and making new ones to go in their place. That this went well is a testament to his organisational and carpentry skills.

Thank you Gary and Kerry



Waikawa Fitness Circuit

Did you know that we have a free fitness circuit in Picton. On the back field of Waikawa Bay School there are currently six workout stations with two more stations being installed at the start of next year - parallel bars and hurdles. The fitness circuit is available to the public outside of school hours all year round.



Sophia Kietzmann and Lajla Browning from Waikawa Bay School demonstrate how to use the equipment.



Craft materials needed

Children's entertainment Pirate island needs your help. We need some things to help create our amazing craft activities.

Old newspapers, long/ small tubes, strawberry containers, small egg containers, wine corks, rubber bands, old stocking, potato sacks, old t-shirt(clean please), photocopy boxes and lids, sponges, straws, ice block sticks and tarpaulin and a plank of wood

Please drop to 22 Durham street during business hours.



Picton Christmas Parade & Carols

Sunday 3rd December 2017

2:30pm - 5:00pm

Don't forget to register your float for the parade, forms can be collected from Harcourts on the High Street. No unregistered floats will be accepted on the day and registrations close 1st December.

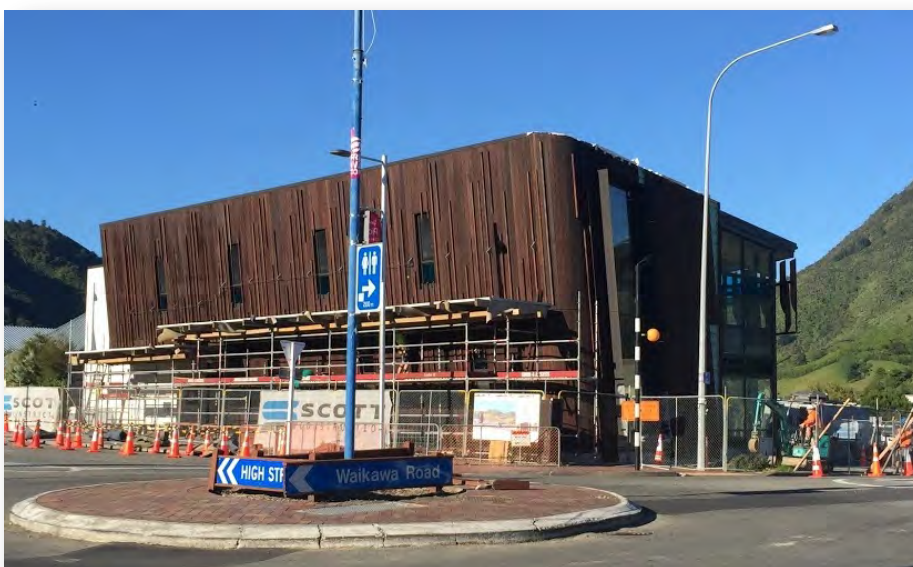
We're on the move!

This is our last week in the current building. On Sunday 19 November 2017 the Picton Library and Service Centre will close the doors at 67 High Street for the last time. We will reopen to the public in the new building at noon Wednesday 29 November.

From Monday the 20th of November a combined Library and District Council team will be busy moving resources and services (including some lovely new books) down the street to the new building - Picton Library and Service Centre Waitohi Whare Matauranga.

"It's going to be a big job with 18,000 items to be moved but we're confident we can get everything into manageable order in the time that's been allowed," says District Libraries Manager Glenn Webster.

There will be no telephone or internet contact available to either the old or the new building between Monday 20 November and Tuesday 29 November while the new communications infrastructure is installed.



Make sure you have borrowed plenty!

You won't be able to borrow or return items at Picton while we are closed.

The District Library and District Council Offices in Blenheim will happily deal with any issues that need addressing during this time.

If you usually attend meetings for local groups here at the library, please check with your coordinator, as our meeting spaces will also not be available.

There will be a dawn blessing of the new building on the morning of Wednesday 29 November before a "soft opening" at noon.

This will mark the end of the first part of the project which will continue on to develop the outdoor spaces around the new building. An opening celebration is being planned for late February 2018, once the whole project has been completed.

What's on?

Moving, moving, moving.....

| | |
|------------------|--|
| 20 – 28 November | Library and Service Centre closed |
| 29 November | 12.00 Noon Library and Service Centre open |



Picton Library and Council Service Centre
67 High Street, Picton
Tel: 03 520 7493, Fax: 03 578 2783
Email: pictonlibrary@marlborough.govt.nz

Normal Opening Hours
Monday to Friday 8.00 am to 5.00 pm
Saturday 10.00 am to 1.00 pm
Sunday 1.30 pm to 4.30 pm

Plague skinks found near Picton

Thanks to a sharp-eyed resident, a plague skink (also known as rainbow skink) was captured in Waikawa near Picton in early October. A second skink was subsequently caught at the same location during an investigation by Marlborough District Council, the Ministry for Primary Industries and the Department of Conservation.

Marlborough District Council Biosecurity Coordinator Jono Underwood says plague skinks are native to Australia but have established and spread rapidly throughout the warmer parts of the North Island. They breed prolifically and are thought to out-compete native lizards for food and territory.



“Plague skinks are a classic hitchhiker - they love to lay their eggs in pot plants, building materials and outdoor landscaping goods. It is therefore important that anyone moving materials like this from north to south checks for signs of plague skinks or other invasive pests such as the Argentine ant,” Jono says.

“As part of our investigation we are working to determine whether the captured plague skinks are escaped hitchhikers or a sign of a more established population.”

“This capture is only one of a handful of plague skink detections in the South Island. There are yet to be any confirmed established populations.”

The small lizard measures 3 to 4 cm from nose to hind legs, excluding the long thin tail. Brown or grey-brown with a dark brown stripe down each side, the species has an iridescent rainbow or metallic sheen when seen in bright light. Although adults are smaller than native skinks, they look very similar but are easily distinguished by the single large scale on top of their head, compared to native skinks which have two smaller scales.

For more information visit the Department of Conservation website

If you think you have seen a plague skink, please contact the Marlborough District Council Biosecurity Team Ph: 03 520 7400. Email Biosecurity@marlborough.govt.nz

Picton is just a step away from getting its own weather station

Picton is a step away from getting its own weather station, subject only to confirmation that a television channel would include the town on its weather maps.

The Picton and Marlborough Sounds Tourism Group brought the proposal to Council earlier this year, seeking funding through the 2017-18 Annual Plan. It was suggested the weather station could feed Picton data to the Met Service for its national weather forecasting services to help ‘put Picton on the map’ as well as provide rainfall figures to Council’s hydrology monitoring programme.

Council yesterday agreed to install and maintain the weather station if the Tourism Group can negotiate arrangements with a national broadcaster to use the data.

Council’s environmental science and monitoring group has identified a suitable site for a weather station at the southern stopbank of Waitohi Domain close to Dublin Street. It would measure rainfall, wind speed and direction, air temperature, humidity and barometric pressure using equipment which complies with the National Environmental Monitoring Standards.

The estimated cost of installing the weather station is \$25,000 with an operating budget of up to \$5,500 a year, depending on whether other funding sources can be found.

PICTON'S GREEN SCENE



Dont throw away those eggshells. They are so filled with goodness. Break them up and pop them into the bottom of a pot before you plant your herbs or flowers. Grind them up and put on your garden or in your compost. They are great for the soil. Scatter them around plants that snails love, they are sharp and the snails cant handle that. So save your shells and reap the benefits.

Brought to you by Linda Thompson of Plastic Bag Free Picton and Picton Smart & Connected Environment working group.



Havelock Theatre Company

Presents

Your very own

Band Of Locals

Come and join the "Band of Locals" for a night of something a bit different, enjoy a range of easy listening favourites with the usual "Havelock Theatre" cosy cafe style, BYO seating and room for a bit of a boogie.

Don't miss out!

Thursday Night/Gala Night - Wine sponsored by Georges Michel Wine Estate

Two Nights Only: Thursday 23rd November 7.30pm Friday 24th November 7.30pm

Tickets: Adults \$20.00, Senior Citizens \$15.00 & Children \$10.00

Available From: Eyes on Nature/Havelock 5742590, Still Books/Blenheim 5789701, Take Note/Picton 5736107, Foresters Cafe/Mount Richmond, Rai Valley 5716070

Door sales will be available, however with only 2 nights we would advise pre-purchasing your tickets!

Cruise Ship Arrivals 2017/2018

| Date | Times | Ship | Pax | Berth |
|--------|---------------|----------------------|-------|--------------|
| 21 Nov | 06:00 – 17:00 | Golden Princess | 2,590 | Waimahara |
| 01 Dec | 08:00 – 23:00 | Noordam | 2,100 | Waimahara |
| 06 Dec | 06:00 – 17:00 | Radiance of the Seas | 2,400 | Waimahara |
| 10 Dec | 06:00 – 15:00 | Noordam | 2,100 | Waimahara |
| 14 Dec | 06:00 – 15:00 | Ovation of the Seas | 4,600 | Waimahara |
| 16 Dec | 06:00 – 16:00 | Silver Shadow | 350 | Waitohi West |
| 17 Dec | 06:00 – 18:00 | Seabourn Encore | 400 | Waitohi West |
| 22 Dec | 10:00 – 18:00 | Silver Shadow | 350 | Waitohi West |
| 23 Dec | 05:30 – 11:00 | Caledonian Sky | 93 | Ship Cove |



Picton Heritage & Whaling Museum

Welcomes groups, families and individuals of all ages



Who can remember when Picton had its own hospital?

We can!



Memories Magazine Calendars For sale \$15 each



Picton Museum, 9 London Quay, Picton
Open daily 10am-4pm



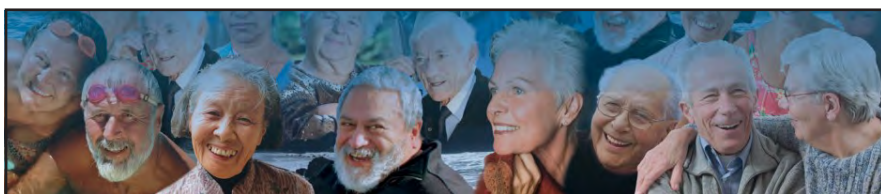
Picton Happenings

The Picton Resource Centre will be closed over the Christmas period from Thursday 21st December 2017 through till Friday 12th January 2018. There are only two more issues of the Picton Happenings that will be published this year. If you have an item that you wish to feature before Christmas then please contact Nicci at the Picton Resource Centre on 03 573 7790 or email prcentre@xtra.co.nz.



Monday 27th November 2017
6.30 pm onwards

Listen out for the fire engine sirens on your street
 and be ready with your non perishable goods



Age Concern Marlborough are looking for
 volunteer Relief Carers in the **Picton** area

You will be supporting people with disabilities and
 their primary carer and you will be providing an
 invaluable service that allows a disabled person to
 remain living at home in the Picton community.

NB. You will be paid a contribution towards costs.

To find out more about the home Carer Support service
 or if you wish to become a Relief Carer please contact:

Catherine Donnelly

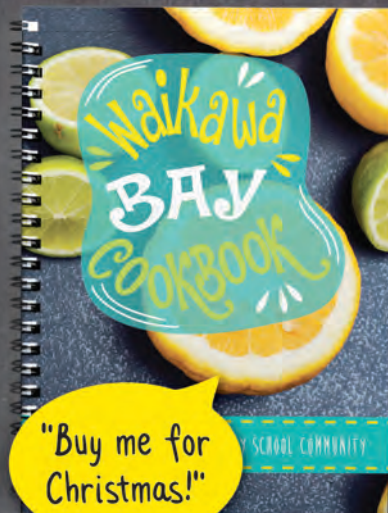
(Community Welfare Coordinator)

Tel: **03 579 3457**

Email: fieldageconble@xtra.co.nz



WAIKAWA BAY SCHOOL PTA FUNDRAISING COOKBOOK



The new WBS cookbook has been put
 together by the **Waikawa Bay School PTA**.

It includes a **collection of recipes from our
 school community** (current & past parents,
 grandparents, staff and students) and some
stunning photography by Richard Briggs
 of our students and the food.

The money raised through the sale of
 this cookbook will go **directly towards**
benefiting all of the students
at Waikawa Bay School.

Please support us, we've worked really
 hard on this project!

Available now for purchase!
\$20 each

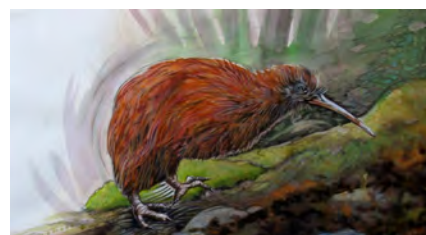
Available from the school office
Monday - Friday (9am - 3pm)

Waikawa Bay School
 282 Waikawa Road, Waikawa
 Ph (03) 573 6636

Two great Kiwi-mas Presents !
Available from Kaipupu Point Shop
Mariners Mall, Picton



Based on a real 'kiwi versus digger' event, this captivating New Zealand tale has
 been brought to life. Full colour illustrations and photographs describe the journey
 in read-aloud rhyme of a hatching chick and his rescue. \$25.00



Exclusive Limited Edition
 Print on 350gsm paper.
 Each print is individually
 embellished and signed by
 award-winning artist
 Caroline della Porta



Give something special and help our Kiwi !
Money raised goes to Kaipupu Trust.

Picton Courses

1ST AID



course at Picton Fire Station on **Friday 24th November**. Starts 8.30am.

Visa/Mastercard accepted.
(Rural subsidies available)

NZQA rated, renew or full first aid at work courses. Fun & fast.
Call Nine Scott on 0800 9347837 or email
nine@tripleonecare.co.nz

Shedding Light on a Wholefoods Plant-based Diet

Monday 4th December, 7.30 pm - 9.30 pm

Te Paranui Homestead, 1310 SH1, Koromiko

- * 10 Common Myths de-bunked
- * 7 Nutrient Facts and Figures
- * 5 Basic Tolls for the Kitchen
- * 3 Easy Steps to a Healthier Diet



Workshop fee: \$15 per person

Book via the website: www.teparanui.nz/earthbound/
Or phone 027 895 3688

Propagating Workshop

Saturday 18th November, 10.00 am - Noon

\$10 per person

The Plant Shed, PowerHouse Reserve, 8 Wairau Rd, Picton

Learn basic propagating techniques using cuttings or by dividing plants. Learn how to make potting mix and all about natives and herbs. There is a wide variety of herbs, hebes and native trees which you can select from at the PowerHouse Reserve or bring their own. The potting mix and containers are supplied and you can keep what you prepare - about twenty each.



Bookings are essential. To book your place contact Picton Resource Centre on 03 573 7790 or email prcentre@xtra.co.nz.



Queen Charlotte Yacht Club
Picton, New Zealand

...invites you to our...



Have you ever wanted to learn to sail? Here's your chance!

Queen Charlotte Yacht Club is running LEARN TO SAIL courses in the next school holidays:

The LEARN TO SAIL courses are run by qualified Yachting NZ instructors and you will receive:

- ☐ 12 Hours tuition over three days
- ☐ Yachting NZ LEARN TO SAIL Logbook and Certificate
- ☐ Use of an Optimist boat for the duration of the course.
- ☐ Optional reduced membership fee for the rest of the season giving you boat-use & coaching
- ☐ Make new friends and have lots of fun while learning a new skill



REGISTER ONLINE at www.qcyc.org.nz

Be in quick as each course is limited to the first 10 kids registered and paid.
Please see the QCYC website www.qcyc.org.nz for more information and the contact details of our LEARN TO SAIL coordinator LTS.qcyc@gmail.com

Boating
EDUCATION



Course



Day Skipper

Suitable for all members of the family or crew. This course is the foundation for all types of boating, power, sail, jet and stand up paddle boards – a broad course outlining the whole boating experience.

Date: 25 and 26 November 2017 Time: 9:00am to 5:00pm
Cost: \$250



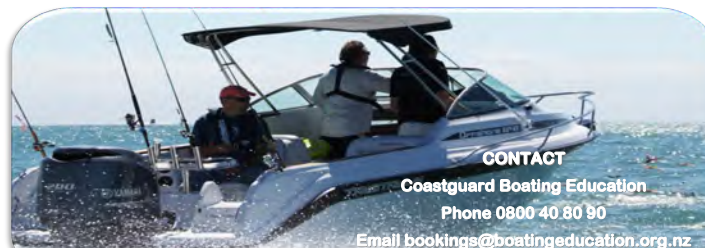
Boatmaster

Suitable for the more experienced boater and a core course for those considering becoming a commercial skipper. Extend your knowledge in chart-work, navigation techniques, distress signals, emergency procedures, knots, rope work. The course provides a thorough understanding of the rules of the road at sea.

Date: 4–8 December 2017 Time: 8:30am to 4:30pm
Cost: \$495

Venue: Picton—Ogilvie-Lee Emergency Operations Centre

Local Tutor: Katie McNabb Phone: 027 433 2824 Call anytime



Volunteer in Picton

Are you looking for volunteers for your organisation? Ask at the Picton Resource Centre for more information on how we can help.

Who: St John Picton
What: St John Picton urgently needs Ambulance Volunteers to help provide emergency Ambulance Services locally. Volunteers work as part of a dedicated team and receive full training, uniform and on-going support.
How: Telephone Anne Parker on 03 578 0797 or email anne.parker@stjohn.org.nz
Website: www.stjohn.org.nz



St John

Who: IHC New Zealand
What: IHC advocates for the rights, inclusion and welfare of all people with intellectual disabilities and supports them to live satisfying lives in the community.
How: Telephone Jane on 027 836 0342 or register your interest online
Website: www.ihc.org.nz/volunteer



Who: Neighbourhood Support
What: Neighbourhood Support aims to make our homes, streets, neighbourhoods and communities safer and more caring places in which to live. Volunteers are needed to be coordinators in Picton and Waikawa.
How: Telephone Shirley Timms on 027 625 3080 or email pearlyshells007@gmail.com
Website: www.neighbourhoodsupport.co.nz



Who: Alzheimers Marlborough Day Programme Picton
What: Do you have a pleasant manner, patience, dependability, sense of humour and an empathy with people? We have shifts available either morning or afternoon on a Friday at our Picton Forget-Me-Not-Club.
How: Contact Alzheimers Marlborough on 577 6172
Website: www.alzheimers.org.nz/malborough



Who: New Zealand Red Cross
What: Could you help when it counts? New Zealand Red Cross are looking for volunteers for their Response Teams in the Marlborough area.
How: Telephone 03 578 6134 or email Donna.mote@redcross.org.nz
Website: www.redcross.org.nz



Who: Picton Dawn Chorus
What: Picton Dawn Chorus is dedicated to eliminating predators from the Picton/Waikawa area. We are in need of volunteers and you only need to be available for a couple of hours once a month to make a difference!
How: Telephone Siobain on 021 BIRDS12 (021 247 3712) or email pictondawnchorus@gmail.com
Website: www.pictondawnchorus.nz



Who: The Plant Shed
What: Volunteers are needed to help with the nursery at Picton PowerHouse Trust. Work would involve mixing potting mix, potting and propagating, general lifting and tidying, weeding and watering.
How: Contact Nozz on 03 573 7226

Who: Enliven (Positive Aging Services)
What: We are looking for volunteers to help one day a week at our Totara Day Programme in Picton. If you are interested in assisting or have experience with older people you're just who we're looking for.
How: Telephone Loreto on 03 577 9005
Website: www.enliven.org.nz



Who: Picton Heritage and Whaling Museum
What: We are looking for volunteers to help for 1 session of 3 hours per month. Help to present our history.
How: Telephone 573 8283 or call in at 9 London Quay
Website: www.pictonmuseum-newzealand.com



Who: Edwin Fox Maritime Museum
What: Volunteers needed this summer to hang out on our lovely ship and chat to our visitors about the Edwin Fox.
How: Telephone Karen McLeod on 03 573 6868 or 027 573 6868
Website: www.edwinfoxsociety.com



PICTON WEEKLY EVENTS

MONDAY

Tai Chi: 8.00 am, Jade Lodge, 37-41 Auckland St
Picton Walking Group: 9.30 am, Picton RSA carpark
Tumble Tots: 10.30 am, Port Marlborough Pavilion
Writers of Picton: 11.30 am, 1st Mon of month, Picton Library
Senior Citizens: 1.00 pm onwards, Picton RSA
Arapawa Boxing Club: 5.30 – 6.15 pm, Picton Scout Hall
Girl Guides: 6.00 – 8.00 pm, St. Josephs School
Picton Pav Yoga: 6.00 – 7.30 pm, Port Marlborough Pavilion
Sounds Accordionaires: 7.00 – 8.30 pm, 62 Moana View

TUESDAY

Tai Chi: 8.00 am, Jade Lodge, 37 - 41 Auckland St
Picton Playcentre: 9.30am - Noon, 5 Waitohi Place
Picton Table Tennis: 10.00 am, Picton Little Theatre
Picton Newcomers Network: 1st & 3rd Tues of month 10.00 - 11.30 am, Seabreeze Café
Table Tennis: 10.00 am– Noon, Picton Little Theatre
Spinners and Knitters: 10.30 am, Picton Library
Picton Women's Institute: 1st Tues of month, 12.00 – 3.00 pm, Anglican Church Hall
Tasty Cooking Club: 3.30 – 4.30 pm, Picton Library
Aikido Adult Classes: 6.00 pm, Port Marlborough Pavilion
Picton Yoga With Kate: 6.00 – 7.00 pm, 32 Waimarama St

WEDNESDAY

Tai Chi: 8.00 am, Jade Lodge, 37-41 Auckland St
St. Joseph's Catholic Church: Mass 9.00 am
Picton Men's Shed: 9.00 am – 4.00 pm, Men's Shed
Anglican (Holy Trinity) Church: Service 10.00 am, 38 York St
QC Fellowship Club: 2nd Weds of month, 10.00 am, Port Marlborough Pavilion
Picton Poets: 3rd Weds of month, 10.30 am, Picton Library
Picton Bowling Club: 12.45 pm, 25 Kent Street
Mahjong: 1.00 pm, Marina Cove Club Room
Arapawa Boxing Club: 5.30 – 6.15 pm, Picton Scout Hall
Dance Fit: 6.00 – 7.00 pm, Port Marlborough Pavilion
Picton Mountain Bike Group: 6.15 pm, Pavilion Car Park
Picton Lions (Tea): 6.30 pm, The Barn, 1st Weds of the month
Picton Lions (Committee): 6.30 pm, Port Marlborough Pavilion, 3rd Weds of the month
Konga: 6.30 pm, Picton School Hall
Indoor Bowls: 7.00 pm, Port Marlborough Pavilion
Quiz Nights: 7.30 pm, Picton RSA & Club
Scottish Country Dancing: 7.30 pm, Picton Little Theatre

THURSDAY

Tai Chi: 8.00 am, Jade Lodge, 37-41 Auckland St
Union Parish Op Shop: 9.00 am – 2.00 pm, 40 Broadway
Picton Playcentre: 9.30am - Noon, 5 Waitohi Place
Mainly Music: 9.30 – 10.45 am, Picton Anglican Church
Senior Net Workshop: 10.00 am 3rd Thurs of month, Library
Table Tennis Club: 10.00 – Noon, Port Marlborough Pavilion
Grey Power: 3rd Thurs of month, 1.30 – 3.30pm, Picton RSA,
Pottery: 1.00 – 3.00pm, Essons Valley Art & Craft
Cribbage: 1.30 – 4.00 pm, Marina Cove Club Room
Aikido Children's Class: 5.00 pm, Port Marlborough Pavilion
Aikido Adult Class: 6.00 pm, Port Marlborough Pavilion
Yurt Yoga at Mount Pleasant: 6.00 – 7.30 pm, Yoga Yurt
Aikido Adult Classes: 6.00 pm, Port Marlborough Pavilion,
Sounds Orchestral Ukelele Group (S.O.U.P.): 6.30 pm, Marina Cove Club Room
Bridge Club: 6.45 pm, Union Parish Church Hall

FRIDAY

Tai Chi: 8.00 am, Jade Lodge, 37-41 Auckland St
Picton Pav Yoga: 9.15 – 10.30 am, Port Marlborough Pavilion
Picton Amateur Art Group: 10.00 am – 3.00pm, Picton RSA
Under 5's Stories & Craft: 10.30 am, Picton Library
Welcome In: 1st Fri of month, 11.00 am, Wave Café
Picton Newcomers Network: 5.00-6.00 pm, Seabeeze Café
Picton Wine Club: 6.15 pm, Picton Little Theatre, 1st Fri of the month

SATURDAY

Tai Chi: 8.00 am, Jade Lodge, 37-41 Auckland St
Junior Football, Rugby & Cricket: 9.00am onwards, Port Marlborough Pavilion
Picton Men's Shed: 9.00 am – Noon, Men's Shed
Picton Bowling Club: 12.45 pm, 25 Kent St
St. Joseph's Catholic Church: Vigil Mass 6.00 pm

SUNDAY

Tai Chi: 8.00 am, Jade Lodge, 37-41 Auckland St
Anglican (Holy Trinity) Church: Service 9.00 & 10.30 am
St. Joseph's Catholic Church: Mass 9.00 am
Union Parish of Picton: Service 10.00 am
Picton Baptist Church: Service 10.00 am
Buddhism for Daily Life (Marlborough Group): 1st Sun of month, 10.00 am, 8 Moana View Rd
Table Tennis: 10.00 am– Noon, Picton Little Theatre
Christian Life Centre: Service 11.30 am
St. John in the Wilderness Koromiko: 6.30pm (2nd & 4th Sundays of month)

For more information on any of the events listed here visit
www.pictonresource.co.nz/community-directory

If you would like to add an event to this listing or make an amendment please contact the Resource Centre on 03 573 7790 or email prcentre@xtra.co.nz.