

# PICTON HAPPENINGS

[www.pictonresource.co.nz](http://www.pictonresource.co.nz)

17th May 2017

19

**Zirka Circus,  
Fri 19th to Sun 21st May**

Zirka Circus has successfully been entertaining families in NZ for more than six years and this all new show takes it to a whole new level of entertainment. Performing Arts, Theatre and Show Time all wrapped up in a World class performance embarking on its World Tour. See 20 plus top world class performers showcase death-defying acrobatics and amazing illusions, with more than a little light relief courtesy of the hilarious clowns. Zirka Circus remains a family friendly and animal-free circus, so you can enjoy the action and keep your social conscience completely intact. Head along to Queen Charlotte College for this special show. Price: \$19 to \$86. Tickets: [www.eventfinda.co.nz/2017/zirka-circus/picton/tickets](http://www.eventfinda.co.nz/2017/zirka-circus/picton/tickets).

Fri 19th May, 7.00 pm - 9.00 pm  
Sat 20th May, 2.00 pm - 4.00 pm  
Sat 20th May, 7.00 pm - 9.00 pm  
Sun 21st May, Noon - 2.00 pm



20

**Marlborough Sounds Waka Ama Races 2017,  
Sat 20th May**

This will be the 4th year that Waka Ama races will be held in conjunction with the Portage Kayak Race. While the kayakers race from the Picton foreshore to the Kenepuru Sound and back via Torea Bay and Onahau Bay, the W1 and W2 crews will race 10km from Picton foreshore to Torea Bay (with a neutral bunch paddle back to Picton). The W6 crews will race 20 km from Mabel Island to Torea Bay and Torapapa Point and back to Picton. Registration at Picton Foreshore. Head along to Picton Foreshore between 7.30 am and 2.30 pm to watch these impressive paddlers. For more information visit [www.marlboroughmutisport.wordpress.com](http://www.marlboroughmutisport.wordpress.com).

26

**Waitohi JAB Disco,  
Fri 26th May**

Boogie time.... dust off the dancing shoes... gather the family & friends and head on to the Waitohi JAB disco to meet the rest of the Waitohi family. Wear your favorite dress up. Gold coin entry with tuck shop & hot food available. See you there! 6.00 pm - 8.30 pm Port Marlborough Pavilion, Endeavour Park, Picton.

**SAVE THE DATE**



10.00am - 1.00pm  
weekdays



Mariners Mall  
Picton 7220



03 573 7790



[prcentre@extra.co.nz](mailto:prcentre@extra.co.nz)



[www.pictonresource.co.nz](http://www.pictonresource.co.nz)



[www.facebook.com/  
Picton-Resource-Centre](https://www.facebook.com/Picton-Resource-Centre)



# PICTON DAWN CHORUS

## The Early Bird Catches the Worm



By Siobain Browning (PDC Coordinator)

“The early bird catches the worm, but the second mouse doesn’t always get the cheese”

[www.pictondawnchorus.nz](http://www.pictondawnchorus.nz)

Email: [pictondawnchorus@gmail.com](mailto:pictondawnchorus@gmail.com)

The house mouse (*mus musculus*) is thought to have originated around central Asia but is now spread throughout the world and throughout New Zealand. The first mice arrived in New Zealand in 1824 when the *Henrietta* ran ashore on Ruapuke Island off Stewart Island.



Photo: Nga Manu Images

When conditions are good and food is plentiful, mice numbers can reach plague proportions. In New Zealand this particularly happens during beech mast years when extremely high levels of seeds are produced. Since mice are prolific breeders, reaching sexual maturity in 35 days and with females able to produce a litter of 5-8 babies every 40-50 days, it is easy to see why numbers can quickly build up.

Recent research has shown that mice have a significant impact on the abundance and size of ground-living insects. This in turn reduces the food available for our native wildlife.

At this time of year, mice are particularly active and this is reflected in our mouse catch rate at the moment – both in the Reserves and in Town. It is therefore really important to check your traps regularly and keep them freshly baited. Also, don’t forget to tell us what you catch by submitting the data on our website [www.pictondawnchorus.nz](http://www.pictondawnchorus.nz)

### Catch status per 11/05/2017

Rats	266	Weasels	1
Mice	288	Possums	195
Stoats	0	Hedgehogs	25



Photo: Heather Smithers

CKNZ INSPIRATION CRUISE

**Calling all Conservation and Environmental Super Stars!**

Do you know a child aged 5-12 who want's to make this world a better place?  
We need 50 children who are passionate about NZ conservation to join us on an Inspiration Cruise!  
We will explore the amazing Marlborough Sounds and meet the ocean wildlife before a visit to Lochmara Lodge and the new Underwater Observatory.  
Let's get inspired to take action for conservation!  
To enter we need parents, teachers or children to write us a letter explaining why we should choose them or their nominated child. The Inspiration Cruise will be 930-1230pm on 4th June 2017 so please make sure you can attend before entering.  
50 conservation super stars will be chosen and notified on May 29th 2017.

Entries close May 26th 2017. Post to: CKNZ, Po Box 10, Waikawa Bay, Picton  
OR Email to: [conservationkids@hotmail.co.nz](mailto:conservationkids@hotmail.co.nz)



# Waikawa Bay School - Billy Graham

## Billy Graham... What an entertainer!

Jokes, music, yodeling, story telling, you name it he did it. On Wednesday our Student Leadership Group attended a presentation by Billy Graham at the Clubs of Marlborough. Billy is one of New Zealand's best-loved motivators. He is bold, bouncy and brimming with energy and enthusiasm. His dynamic message was based on the value of listening, healthy living and the aim to become the best you can be.

Billy has travelled all around the world and along the way he has met many interesting people, including Muhammad Ali. When he was younger he wasn't very good at reading and writing but he was good at listening and remembering, today he is living his dream running a boxing gym. He encouraged us to use our imaginations, ask questions and told us - don't wait for something to happen, make it happen.

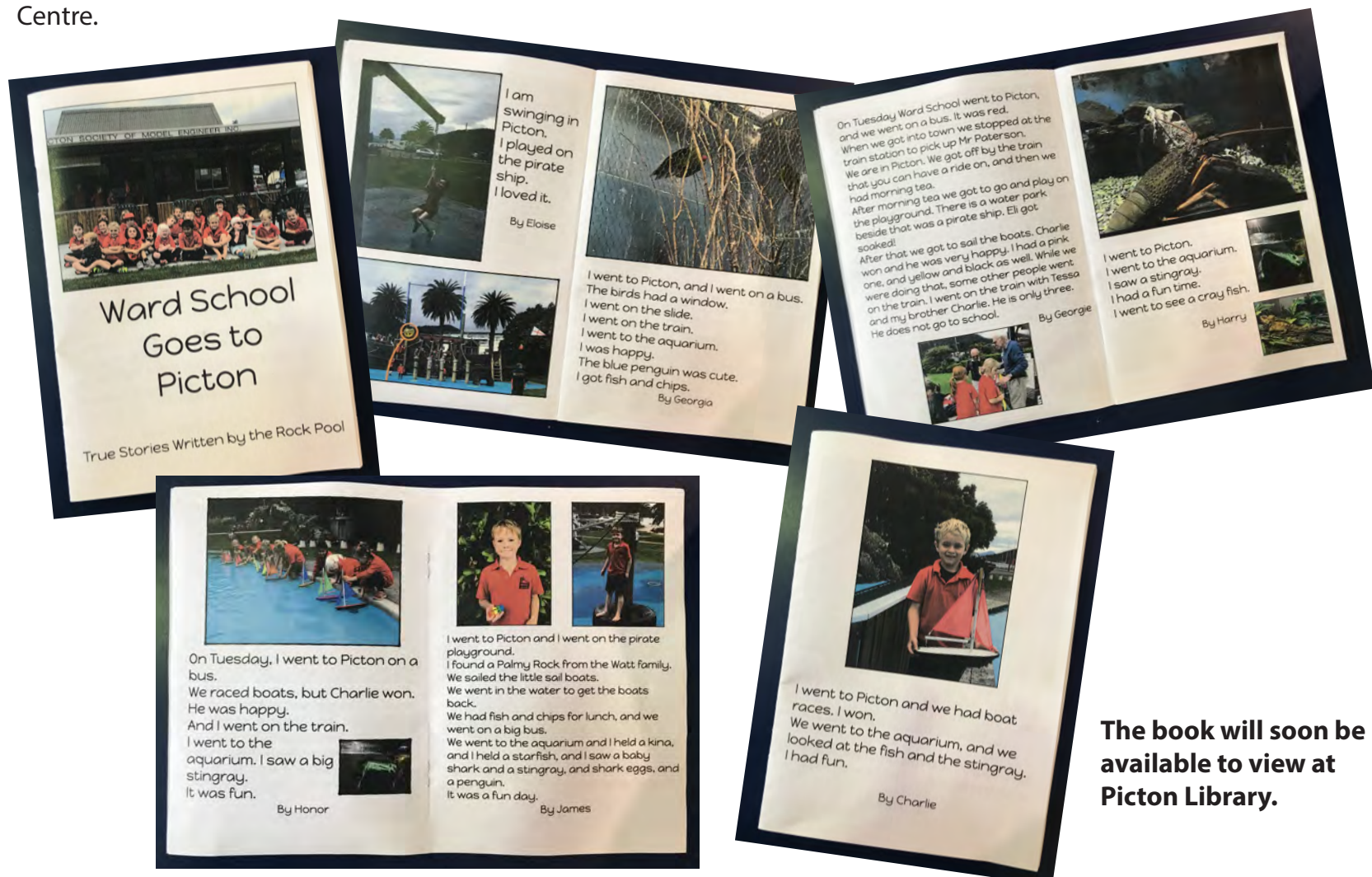
By Leo, Crystal, Amelia, Ocean & Skye



## Picton Rail and Sail

### Ward School Visit to Picton Foreshore

In the last issue of the Picton Happenings Graham Low reported on the Ward School Visit to Picton Rail and Sail which was made possible by fundraising by the Rail and Sail team. The students at Ward School have since written a book about their visit. Below are samples of the writing which can be viewed at the Picton Resource Centre.




The book will soon be available to view at Picton Library.



By Helen Devlin

## New and updated resources at the Library - World Book Encyclopedia

**Remote Access from Home:** Find World Book under Reference or Study resources in the Online Resources listed on the Library website: <http://www.marlboroughlibraries.govt.nz/Online-Resources/Study-Resources>. You will need your library card and pin number.



Help with homework    Help with Research    Accurate and reliable information

## LOOKING FOR SOMETHING?

**WORLD BOOK WEB**

For accurate, reliable and age-appropriate content for homework or research, look no further than the World Book Web!



Our library now subscribes to the **WORLD BOOK WEB**

FREE access from your home computers

**World Book Encyclopedia:** On the shelf we have the new 22 volume World Book Encyclopedia (for browsing through and finding information in the old fashioned way!). This is the 100 year commemorative edition.



**Tagging – Library style:** Marlborough District Libraries is changing over from barcodes to RFID tags to identify books when they are issued and returned. This week our tagging conversion trolley arrived and staff are busy processing, putting a RFID tag on each book. RFID stands for Radio Frequency Identification. You will have seen RFID tags (labels) on items in shops and on books from other library systems. Many libraries around New Zealand now use RFID.

The new system will clear items from your card as soon as they go through the returns chutes. Self-service kiosks will be available to issue and renew items, update your account, reserve items, pay fees and charges, and print or e-mail receipts. The system also makes background library work quicker and easier. Staff will help customers with the new system and still be on hand to issue books and help with enquiries. Blenheim Library will start using the new system first and we will change over with the move to our new library building.

**Book Sale - Queens Birthday Weekend:** The local Friends of the Library group are planning a gigantic book sale during Library hours over Queens Birthday weekend at the Picton Library, Friday 2nd to Sunday 4th June, so mark it on your calendar! If you have some time available and want to be involved with this Friends initiative please contact the Library.

### What's on?

Tagging, tagging, tagging.....

Friday 26 May	10.30 am	Under 5's Story and craft
Queen's Birthday	2nd - 4th June	Book Sale
Tuesdays	10.30 am – 2.00 pm	Picton Spinners and Knitters

**Picton Library and Council Service Centre**  
**67 High Street, Picton**  
**Tel: 03 520 7493, Fax: 03 578 2783**  
**Email: [pictonlibrary@marlborough.govt.nz](mailto:pictonlibrary@marlborough.govt.nz)**

### Opening Hours

<b>Monday to Friday</b>	<b>8.00 am to 5.00 pm</b>
<b>Saturday</b>	<b>10.00 am to 1.00 pm</b>
<b>Sunday</b>	<b>1.30 pm to 4.30 pm</b>

# MARLBOROUGH DISTRICT COUNCIL

## Cook Commemoration Planning Gets Underway

On Monday Mayor John Leggett met with Dame Jenny Shipley, Chair of First Encounters 250, the national organisation planning the 2019/20 commemorations of the 250th anniversary of Captain Cook landing in New Zealand.

They were joined by Raymond Smith (Ngati Kuia) and John Hellstrom, co-chairs of Marlborough's Tōtaranui 250 Trust, which is co-ordinating our contribution to the national celebrations, including a visit by a replica of the Endeavour.

Events will commemorate the first encounters at Meretoto/Ship Cove in 1770 and highlight the voyaging and navigation skills of Maori and European. Cook and his crew spent more time in the Marlborough Sounds than in any other part of New Zealand, and Meretoto/Ship Cove was his favourite anchorage. From here, our early Maori and European relationship began.

Council has allocated \$300,000 to the commemorations, which will create a legacy for future generations, with educational, cultural, environmental and historical projects.

Picton Library and Council Service Centre  
67 High Street, Picton 7220,  
Telephone: 03 520 7493 Fax: 03 520



**MARLBOROUGH  
DISTRICT COUNCIL**

## Picton Smart and Connected Arts & Heritage Working Group



Picton's arts and heritage are centre stage this year with the formation of the Picton Smart & Connected Arts & Heritage Working Group.

Major goals include building greater awareness of activity in the sector within Picton, and support and strengthening external dealings with Council and other significant stakeholders.

Julie Kennedy and Richard Briggs will co-lead the new group and have already had expressions of interest to be involved from a wide range of volunteers. The group will be holding a get together in mid July. More details to come.

Email: [info@pictonsmartandconnected.co.nz](mailto:info@pictonsmartandconnected.co.nz)

Website: [www.pictonsmartandconnected.co.nz](http://www.pictonsmartandconnected.co.nz)

[www.facebook.com/pictonsmartandconnected](https://www.facebook.com/pictonsmartandconnected) or

[www.facebook.com/PictonMyPlace](https://www.facebook.com/PictonMyPlace)

### WANTED: HORSE TO RIDE

Do you have a horse and would like someone to ride it for you? Rebecca is an experienced rider who has worked with Riding for the Disabled. She is looking for a horse to ride in Picton. Call Rebecca on 03 573 6943.

## PICTON FOODBANK

Did you know that the Picton Foodbank relies on financial donations as well as grocery items. Their dedicated coordinator tops up food parcels with perishable items which cannot be donated and stored.

If you would like to make a financial donation please send it to: Picton Foodbank, C/o  
The Anglican Church, 38 York Street, Picton.

Alternatively donations can be made online to **BNZ 02-0740-0017676-00**. Please use the **code 165-18**, Foodbank and state who it's from.

The Foodbank is currently running low on toilet roll. If you can spare any please place them in the Foodbank Bin outside FreshChoice Picton.



every contribution is  
highly valued

thank  
you!



# Waitohi Rugby Club

By Sam Swain

**The Waitohi Rugby teams had mostly good results on Saturday 6th May.**

The Crafar Crouch Waitohi Premier team travelled to Nelson to play Marist, securing a good win maintaining their position in the top four and looking contenders for a semi final spot.

On the first day of Junior Rugby, Waitohi also held its head high. The KAM Transport Waitohi Under 14's beat Awatere 35 – 17 at Seddon. Picton Fresh Choice Waitohi Under 12's had a great 36 – 12 win over Central at Endeavour Park. Coventry Cars Waitohi Under 10 accounted for Harlequins for 17 tries to 3. Hitec Automotive Under 9 weren't quite as successful losing to Moutere at Spring Creek. Picton Motordrome Waitohi Under 8 celebrated their first game of tackle rugby with a win over Awatere at Lansdowne Park. Merv Scott Decorating Waitohi Under 7 seen off a Challenge from Awatere at Endeavour Park starting the season with a win. Picton Sportsworld Under 6 also recorded a win over Central.



## PICTON RESOURCE CENTRE 2017 Donations

Thank you to the following businesses and community groups who have shown their support by donating to the Picton Resource Centre:

Atlantis Backpackers  
Crow Tavern  
Fresh Choice Picton  
Harcourts Picton  
Kaipupu Wildlife Sanctuary  
Karaka Wood Gallery  
Picton Badminton Club  
Picton Bowling Club  
Picton Dawn Chorus  
Picton Dental Spa  
Picton Garden Club  
Picton Girl Guides  
Picton Healthcare Pharmacy

Picton Heritage & Whaling Museum  
Picton Home Hardware  
Picton Little Theatre  
Picton Mens Shed  
Picton Newcomers  
Picton Poets  
Picton Quilters  
Picton Rotary Club  
Picton RSA  
Picton Seaport Trust  
Picton Table Tennis (Theatre)  
Picton Table Tennis Club (Pavilion)  
Picton Wine Club

Picton Womens Institute  
Port Marlborough  
Queen Charlotte Probus  
Seumus Irish Bar  
Society of Model Engineers  
St. Vincent de Paul  
Take Note Picton  
Tombstone Backpackers  
Top 10 Holiday Park  
Union Parish Church  
Waikawa Marae Inc  
Waitohi Rugby Club  
Writers of Picton

## THANK YOU



# Picton Courses

DO YOU WANT TO SPEAK MĀORI?  
YOU CAN WITH US, QUICKLY AND EASILY



Since its beginnings in 1979, Te Ataarangi has engaged communities in learning Māori in homes and on Marae. People from all walks of life are drawn towards this learner friendly method of learning language. Provided with a safe, supportive learning environment you move at your own pace. Like a whāriki (woven mat), the language is interwoven with tikanga Māori and opens the door to the Māori world.



## Te Ataarangi can help you to speak Māori

Information from <http://teataarangi.org.nz/?q=welcome>.

A representative from Te Ataarangi will be at **Waikawa Marae, Sunday 28 May at 3.30pm**. If you are interested in learning Māori and would like to know more about Te Ataarangi and classes starting up at Waikawa Marae you are welcome to attend this hui. Nau mai, Haere Mai

## Introduction to Watercolours Workshop with Jan Thomson



From pencils to brushes, paper to paints. Learn how to prepare your paper and how to apply washes and general watercolour techniques. How to structure a picture and more.

Where: St. Joseph's School, Picton  
When: Sat 5th & Sun 6th August  
Time: 10.00am-3.00pm  
Tutor: Jan Thomson  
Cost: \$120.00  
(All equipment supplied)

To book your place contact the Picton Resource Centre.  
Email: [prcentre@xtra.co.nz](mailto:prcentre@xtra.co.nz)  
Tel: 03 573 7790

[www.pictonresource.co.nz](http://www.pictonresource.co.nz)  
[www.janthomson.co.nz](http://www.janthomson.co.nz)



## 1ST AID

course at Picton Fire Station on **Friday 26th May**. Starts 8.30am.

Visa/Mastercard accepted.  
(Rural subsidies available)

NZQA rated, renew or full first aid at work courses. Fun & fast.  
Call Nine Scott on 0800 9347837 or email [nine@tripleonecare.co.nz](mailto:nine@tripleonecare.co.nz)



The Picton Resource Centre is currently organising a number of REAP courses for the remainder of 2017, including **Adult Learners Week (4th - 10th September)**. If you would like to see a certain course run in the Picton area, please contact us to discuss it further. Also, if you have certain skills and would like to teach a course please get in touch.



## Westpac CHOPPER APPEAL MONSTER BOOK SALE



The Picton Branch of Westpac are holding a book sale for the month of May. For a gold coin donation you can purchase books. Any books you wish to donate to this will be greatly appreciated.



All funds raised in Picton, directly support our local chopper, the **Wellington Westpac Rescue Helicopter**.



**PICTON HERITAGE & WHALING MUSEUM**  
welcomes visitors, groups or individuals  
Phone 573-8283 or call in at 9 London Quay



A recent visit from Riverlands School



# Volunteer in Picton



## Alzheimers Marlborough Day Programme: Picton

Do you have a pleasant manner, patience, dependability, sense of humour and an empathy with people?  
We have shifts available either morning or afternoon on a Friday at our Picton Forget-Me-Not-Club.  
If you are interested in volunteering we would love to hear from you.

Contact us Alzheimers Marlborough 5776172



This work is supported by the faithful giving of volunteers. ~~~~~

## St John PICTON needs MORE Ambulance Volunteers



St John Picton urgently needs Ambulance Volunteers to help provide emergency Ambulance Services locally.

Volunteers work as part of a dedicated team and receive full training, uniform and on-going support.

If you have time to give to your community and are interested in becoming a St John Volunteer, contact:

Anne Parker 03 578 0797 or  
anne.parker@stjohn.org.nz



## New Zealand Red Cross Response Teams Volunteer Now!



Could you help when it counts?

MEDICAL RESPONSE | LIGHT RESCUE | WELFARE SUPPORT

AREA: Marlborough

TELEPHONE

For more information get in touch:

TELEPHONE 03 5786134

EMAIL Donna.mote@redcross.org.nz

0800 733 276 | www.redcross.org.nz



Picton Dawn Chorus is dedicated to eliminating predators from the Picton-Waikawa area.



They are looking for support from all the community, with a trap in every fifth section in town and similar spacings in the bush. They need your help; you could become a member, a donor, a trap purchaser and/or a volunteer.

If you wish to become a volunteer please contact Picton Dawn Chorus for a friendly chat about what this involves.

Donation forms can be collected at the Picton Resource Centre in Mariners Mall.

Tel: 03 573 6334  
P.O. Box 506, Picton

Email: [pictondawnchorus@gmail.com](mailto:pictondawnchorus@gmail.com)  
[www.pictondawnchorus.nz](http://www.pictondawnchorus.nz)



Welcome to IHC New Zealand  
IHC will advocate for the rights, inclusion and welfare of all people with intellectual disabilities and support them to live satisfying lives in the community.

### VOLUNTEERING

Play a big part in the life of a person with an intellectual disability and the work IHC does by joining our One-to-One Friendship or Skills-based Volunteer Programmes.



We are currently looking for volunteers in the **Picton** area. If you are interested in volunteering please call Jane on 027 836 0342 or go to [www.ihc.org.nz/volunteer](http://www.ihc.org.nz/volunteer) to register your interest and a volunteer coordinator in your area will get back to you.

*"What you give as a volunteer you get back. It makes a big difference to your friend's life, you share the enjoyment and have lot of fun along the way," Margaret, Blenheim*



## GOOD NEIGHBOURS, STRONG COMMUNITIES

### JOIN THE NEIGHBOURHOOD SUPPORT

Volunteers wanted to be coordinators in Picton and Waikawa for Neighbourhood Support Group. Anyone interested please contact Shirley Timms.

EMAIL: [pearlyshells007@gmail.com](mailto:pearlyshells007@gmail.com)

MOBILE: 027 625 3080

WEBSITE: [www.facebook.com/shirley.timms.7](http://www.facebook.com/shirley.timms.7)

Neighbourhood Support aims to make our homes, streets, neighbourhoods and communities safer and more caring places in which to live.

[www.ns.org.nz](http://www.ns.org.nz)



## PICTON HERITAGE & WHALING MUSEUM

would like to have more volunteers  
1 session of 3 hours per month

HELP TO PRESENT OUR HISTORY

Phone 573 8283 or call in at 9 London Quay



**PICTON**  
Resource Centre Inc.

Are looking for volunteers for your organisation? Ask at the Picton Resource Centre for more information on how we can help.

T: 03 573 7790

E: [prcentre@xtra.co.nz](mailto:prcentre@xtra.co.nz)  
[www.pictonresource.co.nz/volunteers](http://www.pictonresource.co.nz/volunteers)



## Volunteer Today

We are looking for volunteers to help one day a week at our new Totara Day Programme in Picton. If you are interested in assisting or have experience with older people you're just who we're looking for.



Please contact Loreto on 03 577 9005

Volunteers  
Needed!



Picton Rail and Sail are in need of more volunteers. 2017 sees the facility turn 50 but more help is needed to reach this milestone.

For more information contact Russell Mathews on 573 8553 or Graham Low on 573 6356.



# PICTON WEEKLY EVENTS

## MONDAY

**Tai Chi:** 8.00 am, Jade Lodge, 37-41 Auckland St  
**Picton Walking Group:** 9.30 am, Picton RSA carpark  
**Tumble Tots:** 10.30 am, Port Marlborough Pavilion  
**Writers of Picton:** 11.30 am, 1st Mon of month, Picton Library  
**Senior Citizens:** 1.00 pm onwards, Picton RSA  
**Junior Badminton:** 3.15 – 4.30 pm onwards, QCC Gym  
**Arapawa Boxing Club:** 5.30 – 6.15 pm, Picton Scout Hall  
**Girl Guides:** 6.00 – 8.00 pm, St. Josephs School  
**Sounds Accordionaires:** 7.00 – 8.30 pm, 62 Moana View

## TUESDAY

**Tai Chi:** 8.00 am, Jade Lodge, 37 - 41 Auckland St  
**Yin Yoga:** 8.30 - 9.45 am, Port Marlborough Pavilion  
**St. Joseph's Catholic Church:** Mass 9.00 am  
**Picton Playcentre:** 9.30am - Noon, 5 Waitohi Place  
**Picton Newcomers Network:** 1st & 3rd Tues of month 10.00 - 11.30 am, Seabreeze Café  
**Table Tennis:** 10.00 am– Noon, Picton Little Theatre  
**Spinners and Knitters:** 10.30 am, Picton Library  
**Picton Women's Institute:** 1st Tues of month, 12.00 – 3.00 pm, Anglican Church Hall  
**Tasty Cooking Club:** 3.30 – 4.30 pm, Picton Library  
**Aikido Adult Classes:** 6.00 pm, Port Marlborough Pavilion  
**Picton Yoga With Kate:** 6.00 – 7.00 pm, QCC  
**Housie:** 7.00 pm, Picton RSA  
**Senior Badminton:** 7.00 pm onwards, QCC Gym

## WEDNESDAY

**Tai Chi:** 8.00 am, Jade Lodge, 37-41 Auckland St  
**St. Joseph's Catholic Church:** Mass 9.00 am  
**Picton Men's Shed:** 9.00 am – 4.00 pm, Men's Shed  
**Anglican (Holy Trinity) Church:** Service 10.00 am, 38 York St  
**Weightwatchers:** 10.00 am, St Joseph's School  
**QC Fellowship Club:** 2nd Weds of month, 10.00 am, Port Marlborough Pavilion  
**Picton Poets:** 3rd Weds of month, 10.30 am, Picton Library  
**Picton Bowling Club:** 12.45 pm, 25 Kent Street  
**Arapawa Boxing Club:** 5.30 – 6.15 pm, Picton Scout Hall  
**Dance Fit:** 6.00 – 7.00 pm, Port Marlborough Pavilion  
**Picton Lions (Tea):** 6.30 pm, The Barn, 1st Weds of the month  
**Picton Lions (Committee):** 6.30 pm, Port Marlborough Pavilion, 3rd Weds of the month  
**Konga:** 6.30 pm, Picton School Hall  
**Indoor Bowls:** 7.00 pm, Port Marlborough Pavilion  
**Quiz Nights:** 7.30 pm, Picton RSA & Club  
**Scottish Country Dancing:** 7.30 pm, Picton Little Theatre

## THURSDAY

**Tai Chi:** 8.00 am, Jade Lodge, 37-41 Auckland St  
**St. Joseph's Catholic Church:** Exposition 11.00-12.00 pm  
**Union Parish Op Shop:** 9.00 am – 2.00 pm, 40 Broadway  
**Picton Playcentre:** 9.30am - Noon, 5 Waitohi Place  
**Mainly Music:** 9.30 – 10.45 am, Picton Anglican Church  
**Senior Net Workshop:** 10.00 am 3rd Thurs of month, Library  
**Table Tennis Club:** 10.00 – Noon, Port Marlborough Pavilion  
**Grey Power:** 3rd Thurs of month, 1.30 – 3.30pm, Picton RSA,  
**Pottery:** 1.00 – 3.00pm, Essons Valley Art & Craft  
**Cribbage:** 1.30 – 4.00 pm, Marina Cove Club Room  
**Aikido Children's Class:** 5.00 pm, Port Marlborough Pavilion  
**Aikido Adult Class:** 6.00 pm, Port Marlborough Pavilion  
**Yurt Yoga at Mount Pleasant:** 6.00 – 7.30 pm, Yoga Yurt  
**Picton Yoga With Kate:** 6.00 – 7.00 pm, QCC  
**Aikido Adult Classes:** 6.00 pm, Port Marlborough Pavilion,  
**Sounds Orchestral Ukelele Group (S.O.U.P.):** 6.30 pm, Marina Cove Club Room  
**Bridge Club:** 6.45 pm, Union Parish Church Hall

## FRIDAY

**Tai Chi:** 8.00 am, Jade Lodge, 37-41 Auckland St  
**Picton Pav Yoga:** 9.15 – 10.30 am, Port Marlborough Pavilion  
**Picton Amateur Art Group:** 10.00 am – 3.00pm, Picton RSA  
**Under 5's Stories & Craft:** 10.30 am, Picton Library  
**Welcome In:** 1st Fri of month, 11.00 am, Wave Café  
**Picton Newcomers Network:** 5.00-6.00 pm, Seabeeze Café  
**Picton Wine Club:** 6.15 pm, Picton Little Theatre, 1st Fri of the month

## SATURDAY

**Tai Chi:** 8.00 am, Jade Lodge, 37-41 Auckland St  
**Junior Football, Rugby & Cricket:** 9.00am onwards, Port Marlborough Pavilion  
**Picton Men's Shed:** 9.00 am – Noon, Men's Shed  
**Picton Bowling Club:** 12.45 pm, 25 Kent St  
**St. Joseph's Catholic Church:** Vigil Mass 6.00 pm

## SUNDAY

**Tai Chi:** 8.00 am, Jade Lodge, 37-41 Auckland St  
**Anglican (Holy Trinity) Church:** Service 9.00 & 10.30 am  
**St. Joseph's Catholic Church:** Mass 9.00 am  
**Union Parish of Picton:** Service 10.00 am  
**Picton Baptist Church:** Service 10.00 am  
**Buddhism for Daily Life (Marlborough Group):** 1st Sun of month, 10.00 am, 8 Moana View Rd  
**St. John in the Wilderness Koromiko:** 6.30pm (2nd & 4th Sundays of month)  
**Table Tennis Club:** 7.00 – 9.00 pm, Port Marlborough Pavilion

For more information on any of the events listed here visit  
**[www.pictonresource.co.nz/community-directory](http://www.pictonresource.co.nz/community-directory)**

If you would like to add an event to this listing or make an amendment please contact the Resource Centre on 03 573 7790 or email [prcentre@xtra.co.nz](mailto:prcentre@xtra.co.nz).