

PICTON HAPPENINGS

www.pictonresource.co.nz

18th October 2017

21

Linkwater School Spring Fair and Taste Outward Bound, Sat 21st Oct

The annual fundraising event for the children of Linkwater School is trialing some changes this year and would appreciate your continued support with their events. On Saturday morning they will host their Spring Fair with a massive plant sale, an awesome cafe, raffles and some fun entertainment for your children while you buy. Their plant stall is legendary, and will open at 10 am and close at 1 pm. In the evening there will be a new look auction offering you the opportunity to have an Outward Bound Experience called Taste Outward Bound as well as the chance to bid on some great art and other amazing products. This event starts at 5:30 pm at Outward Bound in Anakiwa. Tickets must be brought prior to the event from Linkwater School for \$45 each (574 2200). Funds raised go towards Linkwater School.



21

Rail and Sail 50th Birthday, Sat 21st Oct

Join the Mayor of Marlborough and the Rail and Sail Volunteers at 11.30 am on Saturday to celebrate the 50th birthday of this iconic Picton attraction. All welcome, enjoy a slice of birthday cake.

21

120 Years of the Edwin Fox in Marlborough, Sat 21st & Sun 22nd Oct

2017 marks the 120th anniversary of The Edwin Fox arriving in Picton and also marks 50 years since the first Edwin Fox Society moved the ship to Shakespeare Bay. Gold coin entry all weekend with free tea or coffee available. 9am - 5pm, Edwin Fox Maritime Museum.

26

QCC Extravaganza, Thurs 26th Oct

Queen Charlotte College students and staff are putting on another show - QCC Extravaganza. Music from the 60s, 70s and 80s. Tickets are \$10 per adult, \$5 per child (5+ years), free for preschoolers and \$25 for a family ticket (2 adults and 3 children). Tickets are now on sale at Beyond the Fringe Picton, Take Note and the QCC school office. 7.00 pm start, Queen Charlotte College Hall, Waikawa Road, Picton.

28

Maungatapu, Sat 28th Oct

Picton Little Theatre presents Maungatapu. In 1866, the 'Burgess/Kelly Gang' murdered five men on the Maungatapu track, near Nelson, in New Zealand's most infamous case of bush-ranging. The gang's subsequent arrest, trial and hangings set the whole colony aflame. Prior to the murders the gang spent time in Marlborough as they headed for Picton, but only made it as far as Canvastown. This play examines the relationships between the gang members as they plot and carry out the murders, are arrested, tried, then executed. Murder, mayhem, love, loyalty, betrayal, honour, comradeship, justice and injustice, this story has it all. Tickets available from Take Note, Picton. 7.30 pm till 9.30 pm.



10.00am - 1.00pm
weekdays



Mariners Mall
Picton 7220



03 573 7790



prcentre@extra.co.nz



www.pictonresource.co.nz



[www.facebook.com/
Picton-Resource-Centre](https://www.facebook.com/Picton-Resource-Centre)

Last Friday saw the grand opening of the new "Envirohub Marlborough" in the old Pegasus building on Auckland Street. The Envirohub is an exciting new venture that has been led by Conservation Kids New Zealand but which aims to assist all conservation groups as well as the general public in reaching their environmental goals.

It is a place where people can find out about conservation volunteering opportunities, where they can seek answers to environmental questions and find ways to take action. The first target of the Envirohub is particularly on youth and families as that was Conservation Kids first passion. A place for kids to come after school to work on environmental projects or take part in a variety of conservation and environment themed activities.



The Hub will consist of a shared office space, presentation/workshop facilities and a resource library. The ability to share these facilities between a number of community groups will minimise costs to each individual or organization. Community groups, such as Plastic Bag Free Picton, Kaipupu Wildlife Sanctuary, Tui Nature Reserve, Picton Dawn Chorus, The Wildlife Recovery Centre and Kiwi Conservation Club, have already got a presence at the Envirohub and with time it is hoped that many, many more will also use the centre as a way to connect with the community and each other.

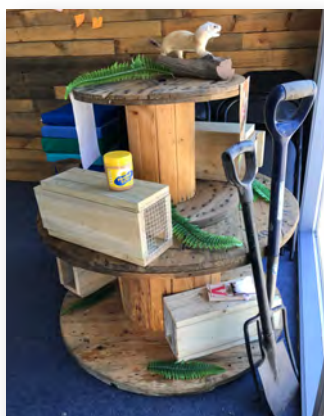
There will also be environmentally friendly products for sale -like sustainable toiletry items, keep cups and water bottles. It will also be the place to buy your garden trap and get trapping advice from Picton Dawn Chorus.

The Marlborough Envirohub has been officially accepted as a member of Environment Hubs of Aotearoa, the national umbrella for local organisations that help Kiwis take practical action in their homes, neighbourhoods, workplaces and wild places.

There will be limited opening hours in October (Weds, Thurs, Fri 10am til 2:30pm) with more comprehensive hours starting in November (Mon-Fri 12:00 til 4:30pm and Sat/Sun 10am til 3pm). We look forward to welcoming you to the new Envirohub very soon!



Above: Envirohub Marlborough founders Natasha Luxton & Amy Healey welcome everyone at the opening celebration



Above: PDC Traps



Above: Environmentally friendly products



Picton Rail and Sail

Celebrating 50 Years

At 11.30 am on Saturday 21st of October the Mayor of Marlborough will stop the train at Picton Rail and Sail to mark the 50th birthday of this iconic Picton attraction. Picton Rail and Sail invites the public to join them for the celebrations and a slice of birthday cake.

How much do you know about Picton Rail and Sail?

1. 2017 marks 50 Years since the formation of the "Picton Society of Model Engineers" who built the original track and pool.
2. It was built by voluntary labour with the help of New Zealand Rail who transported scrap metal to Auckland as a fundraiser and also allowed much metal work to be done in their workshop. NZR may well have been an involuntary sponsor as many members worked for the Railway.
3. Opening day of the train was Labour weekend 1968. The cost of rides was adults 10c and childrens 5c, it's now 20c – person.
4. It became a community project as the Model Engineers moved on, with Pakeke Lions assisting in the running of the train until they went into recess. Now run completely by volunteers from the community under the umbrella of the Society.
5. In the first 45 years since its opening; the pool was plastered, the station relocated and rebuilt, a fleet of yachts made and the original track layout changed. The locomotive petrol motors have been replaced by electric.
6. Rail and Sail became an icon of Picton with travellers amazed at the cost of a ride and many people coming back with their children, grandchildren and even great-grandchild. Passengers off the ferry often stop in Picton especially to give their children a ride on the train.
7. Over the last 10 years, \$24,000 has been returned to the community by donations to various organisations.
8. With an eye to the future, in the last 5 years, the pool has been completely resurfaced, the rails replaced and the fleet of yachts renewed. With local support, over \$80,000 was raised.
9. The previous Picton Council and present Marlborough District Council have been very support over the years and continue to be.
10. Picton people should be proud of the fact that with the support given by volunteers from the community, the "Rail and Sail" has reached this milestone. With the continued support from the community it is hoped that it will one day reach its centenary.



Happy 50th Picton Rail and Sail

America's Cup Parade

Picton Welcomes ETNZ in style

The Flotilla



The day started early for the team from TVNZ's 7Sharp



Can you spot the Cup?



The Parade



School pupils across Marlborough scribbled messages of support on a sail which QCYC members carried in the parade before it was presented to the team



Were you one of the 5,000 who attended?



The Cup Minder keeps an eye on Simon Van Velthooven as he makes a run for it with the cup

The Celebration



Queen Charlotte College & Waikawa Bay School welcome the team



Richard Meacham



Scott Fyfe & Joseph Sullivan wave to the crowd



Chrissy Powlesland, who led the campaign to bring ETNZ 2 Picton



The Auld Mug

Queen Charlotte College

Year Nine Photography



Queen Charlotte College



Abigail Ferguson

By Abigail Ferguson 9G

In Science with Mr Stewart, we have been learning about pinhole cameras, light rays and how light works. At the end of Term 3 we made pinhole cameras out of toilet paper rolls or a shoebox. We used tinfoil, photo film, tape, a pin, cardboard and black paint to construct our cameras. We first painted the inside where the photo film would be sitting; at one end we covered the inside of the camera with tinfoil and taped it in place. We made a cap for the other end to put the film in that would come on and off. Once we have done all that we put a little hole in the tinfoil with the pin, then we made a switch out of cardboard that covered the hole until we were ready to take our photo.

To get ready to take the picture we got into the dark room and we put the photo film in the cap and shut it, so no light could get in. Then, we went to where we wanted to take our photo; we held the switch up for about 30 seconds to let the light in. We had to stay still as the picture was taken. After the 30 seconds, we shut the switch and went back to the dark room. We then took the cap off to take the photo film out and develop it.

We put the film into a developer until we could see the photo develop. While the picture was in the developer we shook the container so the liquid was always moving. We then stuck it into the stop bath to completely stop the development process; we shook it around for 30 seconds and then put the picture into some fixer to fix the photo.

It was quite hard for me to stay still! I kept shaking so my photo came out blurry, which was a shame. But it was really easy to make the camera. We found that if you didn't take your photo in a place with a lot of contrast the picture also wouldn't come out looking good because the light rays weren't bouncing off enough solids to make a decent picture. It was very interesting because we learnt about how photograph taking was like back in the olden days, and it was interesting knowing that the process hasn't left us today, even with all of our technology!



Scissors image showing a strong contrast required to achieve a strong image. Photographer unknown.



Cory Atkinson
and his image



Ethan Usher-Somers
and his image



Picton Dawn Chorus



Picton Dawn Chorus volunteers recognised for their hard work

www.pictondawnchorus.nz
Email: info@pictondawnchorus.nz

By Siobain Browning, PDC Coordinator

Last week, Picton Dawn Chorus (PDC) was very proud to accept the Marlborough Trustpower Community Award in the Environment and Heritage category. The awards recognise voluntary organisations that dedicate hours of voluntary time and energy every year to making the Marlborough district a better place to live.

This year, the little town of Picton had an impressive presence at the awards. Maddi Anderson from Queen Charlotte College was a Finalist in the Youth Spirit Award and the Picton Quilters, St Vincent de Paul and Picton Table Tennis Club were proud representatives from our beautiful town.

PDC volunteers go out every week, come rain or shine, picking dead rats out of traps and recording their findings. They scramble in to the bush to retrieve lost traps and scrub maggots out of dirty traps. It isn't glamorous work and many people would not be willing to do it! But for those with the right attitude it is a great excuse to be active, outdoors and to really enjoy the wonderful native flora and fauna. We have a small number of the most dedicated trap checkers go out almost every week. One notable volunteer has checked a trap line every single week since we started trapping back in August 2016! That makes about 1300 traps checked by just one person (thank you Robert)! We also have volunteers who prepare all the equipment needed weekly – (thank you Alan and Dianne), a volunteer who does the data entry (thank you Phillip) and we had a great team of volunteers manning the pop-up shop.

Then there is the committee, which is made up entirely of volunteers who give an incredible amount of time but also emotional energy driving the project. Without such a dedicated core group this project would not have been possible.

So, this is a big "Thank You" to all the volunteers from Picton Dawn Chorus as well as to the volunteers from the many other organisations that make this town such an awesome place with a great community spirit!



Table Tennis at the Pavilion

"Way more than just a table tennis club" was the phrase used at the Trustpower Community Awards this week for all the Marlborough area. That was when we realized that we were the winners of the prestigious award of 2017 Regional Winner for Sports and Leisure...wow!

Table tennis at the Pavilion was born seven months ago with six enthusiastic, inspired people who had a vision to build a community group where the main focus was fellowship and fun with fitness a bonus.

Support for the council, Port Marlborough Pavilion, Sport Tasman and some delicious home baking, and our club was born. Now we have 52 on our membership role from Picton, Blenheim and surrounding areas.

We have six table tennis tables and meet every Thursday 10 am till noon at the Pavilion. We are extremely fortunate to have this amazing facility which is purpose built and very safe for sporting activities. Safety is my top priority and plans are in progress to extend to Table Tennis for Young People soon.

Phone Nancy on 021 2420 1012 for more information.

By Nancy Woodford



Picton Library



MARLBOROUGH
DISTRICT LIBRARIES

School Holiday Fun at the Library

By Lynnaire Woods

With the holidays in full swing it's been a busy time in the library, lots of children and adults visiting together, enjoying the story and craft activities based around the spring season and generally spending more time at the library reading, relaxing and catching up with friends.

We had a fantastic turnout for visiting Nelson's children's songwriter and entertainer Kath Bee. She had the children singing, dancing, moving and a-grooving to her catchy and delightful songs. Her popular song - Dragons Under My Bed has just been published as a book and is available at the library to borrow, along with her CD's. Highly recommended for young listeners and adults alike, Kath's lyrics cover all the wonders, whys and curiosities of the world around us.

Thanks so much to everyone who brought in a food can as entry to the show. We have a lovely boxful to give to the Picton Foodbank.



What's on?

Tuesdays	10.30am
Friday 27 October	10.30am
Thursday 2 November	10.00-11.30am

Picton Spinners and Knitters
Under 5's Story and Craft
Picton Diabetes Support Group drop-in

Picton Library and Council Service Centre
67 High Street, Picton
Tel: 03 520 7493, Fax: 03 578 2783
Email: pictonlibrary@marlborough.govt.nz

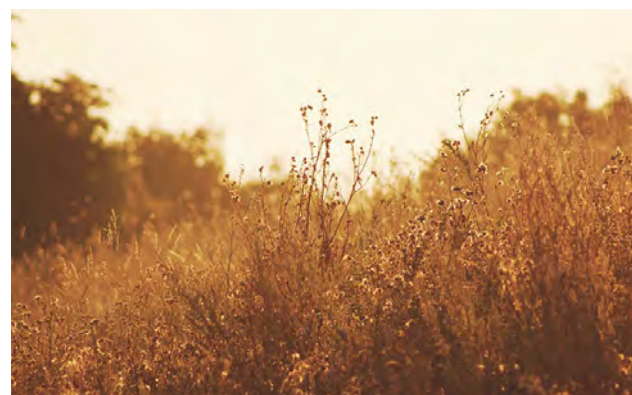
Opening Hours

Monday to Friday	8.00 am to 5.00 pm
Saturday	10.00 am to 1.00 pm
Sunday	1.30 pm to 4.30 pm

Think ahead – control vegetation now

Do you own undeveloped property or wilderness areas with the potential to become a fire risk?

Each summer, Council gets calls from people concerned about neighbouring properties which pose a risk to them – usually because of the growth of highly flammable fuels such as gorse and long dry grass.



There are Council bylaws applying to fire ignition hazards - like stored hay, live ashes, combustible materials in storage and gorse or other growth which could pose a risk to neighbouring property owners.

But too often, where neighbours' concerns are about vegetation, matters are not brought to the Council's attention until the fuels are so dry that it is too dangerous to cut or mow them. Sparks from mowers hitting metal objects, wire and stones are a regular ignition source of fires in the heat of Marlborough's summer.

The vegetation hazard can be safely managed only when the fuel is green or sufficiently damp to cut.

Property owners are reminded that now – and in the next month or two - is the best time of the year to safely mow or cut fuel which will become a hazard when summer arrives.

If you're concerned about vegetation adjacent to your property contact Council on 03 520 7400.

Proposed Marlborough District Council Navigation Bylaw 2017

Read the draft bylaws and have your say on the changes being proposed. Significant changes include the following:

- A requirement to wear a lifejackets in vessels under six metres in length
- Compulsory registration of jet skis
- New requirements regarding the carriage of communication equipment



Council has bylaws to regulate maritime and navigation safety in the waters of Marlborough and is required to review the bylaws regularly. We are proposing that we replace the Navigation Bylaw 2009 with a plain English version and update it to:

- Take into account legislative and technological change such as the promulgation of the maritime Rules Chapter 91
- Remove the provisions relating to commercial vessels and replace them with Harbour Master Directions
- Remove duplication
- Include missing provisions and powers

Anyone can make a submission and your submission can support or oppose the proposals. Your submission should clearly state:

- The part and point of the proposed bylaw the submission relates to
- Whether you support or oppose the provision
- The reasons for supporting or opposing the provision
- Whether or not you wish to be heard in support of your submission

The deadline for submissions is 5.00 pm 31 October 2017. For further information email bylawsubmissions@marlborough.govt.nz. You can make a submission online at www.marlborough.govt.nz. Alternatively you can collect a form from Council offices. Email to bylawsubmissions@marlborough.govt.nz, submit by hand, or post to the Picton or Blenheim Council Office.

PICTON POWERHOUSE NATIVE PLANTS & HERB NURSERY

Open
Wednesdays 9am - 3pm
Saturdays 9am - 12pm

Or other times
when the sign is
out. Phone 027 632
2298 to make an
appointment



8/10 Wairau Road, south
side of Waitohi bridge

A new AED is now located between
Picton 4 Square and Picton Home
Hardware on the High Street.
Available 24/7.



Thank you 4 Square

Waitohi Rugby Football Club AGM is on Wednesday 8th November, 7.00pm @ Port Marlborough Pavilion.

Waitohi RFC and JAB are looking for volunteers to be on the executive committee for BOTH the Rugby football club and the JAB sub committee.

WHO:

RFC: President - Vice President- Treasurer-Committee member

JAB: Chairperson - Treasurer- Committee members

WHAT:

To work together and continue strengthening the LOCAL rugby football club.

HOW:

Donna Sio 0211710153/dmpsio@yahoo.co.nz



Cruise Ship Arrivals 2017

Date	Times	Ship	Pax	Berth
01 Nov	08:00 – 20:00	Noordam	2,100	Waimahara
09 Nov	06:00 – 17:00	Voyager of the Seas	3,200	Waimahara
10 Nov	06:00 – 15:00	Noordam	2,100	Waimahara
21 Nov	06:00 – 17:00	Golden Princess	2,590	Waimahara
01 Dec	08:00 – 23:00	Noordam	2,100	Waimahara
06 Dec	06:00 – 17:00	Radiance of the Seas	2,400	Waimahara
10 Dec	06:00 – 15:00	Noordam	2,100	Waimahara
14 Dec	06:00 – 15:00	Ovation of the Seas	4,600	Waimahara
16 Dec	06:00 – 16:00	Silver Shadown	350	Waitohi West





FOUNDATION CELEBRATION!

to commemorate

**100 YEARS SINCE THE FOUNDATION STONE
OF ST JOSEPH'S CHURCH WAS LAID**

and to celebrate

**153 YEARS OF CATHOLIC EDUCATION
AT ST JOSEPH'S SCHOOL**

SATURDAY 4th NOVEMBER 2017

- 11.00am** Liturgy of thanksgiving in St Joseph's school grounds*
- School & Church memorabilia on display
- 1.00pm** Lunch at Port Marlborough Pavilion (\$20/adult & \$5/child 5yrs+)
- Guest speakers
 - Entertainment for the children

ALL WELCOME BUT BOOKING IS ESSENTIAL

To book your place at lunch, please complete a booking form, or contact:

Shirley Timms Ph 027 6253080 email pearlyshells007@gmail.com
Dianne Smith Ph 03 5736925 email dsmithnz@yahoo.co.nz

*If wet, Liturgy will be held at the Port Marlborough Pavilion, 181 Waikawa Road, Picton



Picton Men's Community Shed

2 Market Street
(Old Toy Library Building)

Wednesday 9.00 am - 4.00 pm
Saturday 9.00 am - Noon

Men of all ages are
welcome to join in the
activities. Come along
and share a yarn.

Well equipped
workshop and plant
nursery with plants
for sale.



For more information contact Kerry
on 03 573 8007

IN AN EMERGENCY
STAY SAFE
STAY
INFORMED



Emergency Radio Stations

In times of emergency, over 60% of Marlborough residents switch on their radio for information. Marlborough Civil Defence recommends you tune into one of the following:

RNZ National 567AM or 101.7FM
Newstalk ZB 92.1 FM
Radio Live 92.3 FM Picton
The Hits 89.1 FM Picton
More FM 94.7 FM Picton
The Breeze 98.7 FM Picton
Brian FM (broadcasts directly from Marlborough Civil Defence's emergency operations centre): **105.9FM - Picton**

Keep a battery powered radio handy, listen to your car radio or listen online. Also, follow Marlborough District Council's Facebook and Twitter.

PICTON LIBRARY HOUSEBOUND SERVICE

If you find it difficult to get out of the house, or know somebody who is elderly or disabled and housebound, we have volunteers who will come and get to know what people like and dislike, and then select, deliver and exchange books and other items such as talking books, DVDs, and jigsaw puzzles

**PERMANENT OR
TEMPORARY**

**NO CHARGES
FOR SERVICE**

CONTACT

PICTON LIBRARY

Ph: 520 7493

For further details



Picton Courses



**Queen Charlotte
Yacht Club**
Picton, New Zealand

*...invites you
to our...*



Have you ever wanted to learn to sail? Here's your chance!

Queen Charlotte Yacht Club is running LEARN TO SAIL courses in the next school holidays:

The LEARN TO SAIL courses are run by qualified Yachting NZ instructors and you will receive:

- ❑ 12 Hours tuition over three days
- ❑ Yachting NZ LEARN TO SAIL Logbook and Certificate
- ❑ Use of an Optimist boat for the duration of the course.
- ❑ Optional reduced membership fee for the rest of the season giving you boat-use & coaching
- ❑ Make new friends and have lots of fun while learning a new skill



REGISTOR ONLINE at www.qcyc.org.nz

Be in quick as each course is limited to the first 10 kids registered and paid.

Please see the QCYC website www.qcyc.org.nz for more information and the contact details of our LEARN TO SAIL coordinator LTS.qcyc@gmail.com

An invitation to everyone to attend a **PET HEALTH AWARENESS SEMINAR** presented by Dr Christine Mackenzie

This seminar has grown so will be presented as a course over 2 nights:
7 pm on **Thursday 19th October** Part 1 - Learn to look (code 150617)
7 pm on **Thursday 26th October** Part 2 - Learn to prevent and save

OR Tuesday 7th & Tuesday 14th November, 7.00 pm

Venue: Picton Fire Station, 87 High St, Picton
Doors open 6.30pm (next to Z, Room on Right at rear)



This 4-5 hours of valuable veterinary experience is offered at \$50 each, \$95 couples (1 folder) or Picton Vet Clinic clients \$45 each, \$85 couples (1 folder), (ask about discount for Community Services card) which includes a power point presentation (on the law, examination and diseases of pets, care and safety), practical session, informative folder and tea/coffee.

Seats are limited so act now and secure your place, with payment by either: cash only to Picton Vet Clinic or via internet banking (PHA) 12-3167-0207074-00 with reference to name + phone and code for the day (above). Also send an email pethealthawareness@gmail.com so a reply can be sent (within 48 hrs) confirming your payment is received. If seats are full then payment will be credited to a future booking. Sessions that are FULL will be advised on website.

For more information visit www.pethealthawareness.co.nz



1ST AID

course at Picton Fire Station on **Friday 27th October**. Starts 8.30am.

Visa/Mastercard accepted.
(Rural subsidies available)

NZQA rated, renew or full first aid at work courses. Fun & fast.
Call Nine Scott on 0800 9347837 or email nine@tripleonecare.co.nz

Communicate with Empathy

An Introduction to Nonviolent Communication (NVC)

This 2 day workshop will focus on the development of empathy skills. The 4 step model of NVC offers a practical toolkit that supports connection.

Helps with:

- ❑ Conflict resolution
- ❑ Stress management
- ❑ Intimate partnerships
- ❑ Positive parenting
- ❑ Balancing work/play

11-12 November, 2017

10-4pm

\$200

**Port Marlborough Pavilion
181 Waikawa Rd, Picton**

Facilitators: Anna Groves and Rob ten Broeke have over 15 years experience in NVC. Anna is a Certified Trainer (CNVC) and Movement Specialist, teaching Dance and Yoga. Rob is a Certified Hypnotherapist, NLP Practitioner and Musician. They run wellness retreats and offer individual sessions.

Bookings:

Kim.pears3@gmail.com

027 299 2991

\$50 deposit

A R Groves: 38-9006-0480819-09

www.nvc.org.nz



Children's Introduction to Tennis Course

Saturday 28th October
9.00 am - 12.00 pm



Children's Introduction to Tennis day with Coaches from Inspire Tennis. Keep an eye on Port Marlborough's Facebook page for more details.

Port Marlborough Pavilion, Endeavour Park, Picton

Volunteer in Picton

Are you looking for volunteers for your organisation? Ask at the Picton Resource Centre for more information on how we can help.

Who: St John Picton
What: St John Picton urgently needs Ambulance Volunteers to help provide emergency Ambulance Services locally. Volunteers work as part of a dedicated team and receive full training, uniform and on-going support.
How: Telephone Anne Parker on 03 578 0797 or email anne.parker@stjohn.org.nz
Website: www.stjohn.org.nz



St John

Who: IHC New Zealand
What: IHC advocates for the rights, inclusion and welfare of all people with intellectual disabilities and supports them to live satisfying lives in the community.
How: Telephone Jane on 027 836 0342 or register your interest online
Website: www.ihc.org.nz/volunteer



Who: Neighbourhood Support
What: Neighbourhood Support aims to make our homes, streets, neighbourhoods and communities safer and more caring places in which to live. Volunteers are needed to be coordinators in Picton and Waikawa.
How: Telephone Shirley Timms on 027 625 3080 or email pearlyshells007@gmail.com
Website: www.neighbourhoodsupport.co.nz



Who: Alzheimers Marlborough Day Programme Picton
What: Do you have a pleasant manner, patience, dependability, sense of humour and an empathy with people? We have shifts available either morning or afternoon on a Friday at our Picton Forget-Me-Not-Club.
How: Contact Alzheimers Marlborough on 577 6172
Website: www.alzheimers.org.nz/malborough



Who: New Zealand Red Cross
What: Could you help when it counts? New Zealand Red Cross are looking for volunteers for their Response Teams in the Marlborough area.
How: Telephone 03 578 6134 or email Donna.mote@redcross.org.nz
Website: www.redcross.org.nz



Who: Picton Dawn Chorus
What: Picton Dawn Chorus is dedicated to eliminating predators from the Picton/Waikawa area. We are in need of volunteers and you only need to be available for a couple of hours once a month to make a difference!
How: Telephone Siobain on 021 BIRDS12 (021 247 3712) or email pictondawnchorus@gmail.com
Website: www.pictondawnchorus.nz



Who: The Plant Shed
What: Volunteers are needed to help with the nursery at Picton PowerHouse Trust. Work would involve mixing potting mix, potting and propagating, general lifting and tidying, weeding and watering.
How: Contact Nozz on 03 573 7226

Who: Enliven (Positive Aging Services)
What: We are looking for volunteers to help one day a week at our Totara Day Programme in Picton. If you are interested in assisting or have experience with older people you're just who we're looking for.
How: Telephone Loreto on 03 577 9005
Website: www.enliven.org.nz



Who: Picton Heritage and Whaling Museum
What: We are looking for volunteers to help for 1 session of 3 hours per month. Help to present our history.
How: Telephone 573 8283 or call in at 9 London Quay
Website: www.pictonmuseum-newzealand.com



Who: Edwin Fox Maritime Museum
What: Volunteers needed this summer to hang out on our lovely ship and chat to our visitors about the Edwin Fox.
How: Telephone Karen McLeod on 03 573 6868 or 027 573 6868
Website: www.edwinfoxsociety.com



PICTON WEEKLY EVENTS

MONDAY

Tai Chi: 8.00 am, Jade Lodge, 37-41 Auckland St
Picton Walking Group: 9.30 am, Picton RSA carpark
Tumble Tots: 10.30 am, Port Marlborough Pavilion
Writers of Picton: 11.30 am, 1st Mon of month, Picton Library
Senior Citizens: 1.00 pm onwards, Picton RSA
Junior Badminton: 3.15 – 4.30 pm onwards, QCC Gym
Arapawa Boxing Club: 5.30 – 6.15 pm, Picton Scout Hall
Girl Guides: 6.00 – 8.00 pm, St. Josephs School
Picton Pav Yoga: 6.00 – 7.30 pm, Port Marlborough Pavilion
Sounds Accordionaires: 7.00 – 8.30 pm, 62 Moana View

TUESDAY

Tai Chi: 8.00 am, Jade Lodge, 37 - 41 Auckland St
Picton Playcentre: 9.30am - Noon, 5 Waitohi Place
Picton Table Tennis: 10.00 am, Picton Little Theatre
Picton Newcomers Network: 1st & 3rd Tues of month 10.00 - 11.30 am, Seabreeze Café
Table Tennis: 10.00 am– Noon, Picton Little Theatre
Spinners and Knitters: 10.30 am, Picton Library
Picton Women's Institute: 1st Tues of month, 12.00 – 3.00 pm, Anglican Church Hall
Tasty Cooking Club: 3.30 – 4.30 pm, Picton Library
Aikido Adult Classes: 6.00 pm, Port Marlborough Pavilion
Picton Yoga With Kate: 6.00 – 7.00 pm, 32 Waimarama St
Senior Badminton: 7.00 pm onwards, QCC Gym

WEDNESDAY

Tai Chi: 8.00 am, Jade Lodge, 37-41 Auckland St
St. Joseph's Catholic Church: Mass 9.00 am
Picton Men's Shed: 9.00 am – 4.00 pm, Men's Shed
Anglican (Holy Trinity) Church: Service 10.00 am, 38 York St
QC Fellowship Club: 2nd Weds of month, 10.00 am, Port Marlborough Pavilion
Picton Poets: 3rd Weds of month, 10.30 am, Picton Library
Picton Bowling Club: 12.45 pm, 25 Kent Street
Mahjong: 1.00 pm, Marina Cove Club Room
Arapawa Boxing Club: 5.30 – 6.15 pm, Picton Scout Hall
Dance Fit: 6.00 – 7.00 pm, Port Marlborough Pavilion
Picton Lions (Tea): 6.30 pm, The Barn, 1st Weds of the month
Picton Lions (Committee): 6.30 pm, Port Marlborough Pavilion, 3rd Weds of the month
Konga: 6.30 pm, Picton School Hall
Indoor Bowls: 7.00 pm, Port Marlborough Pavilion
Quiz Nights: 7.30 pm, Picton RSA & Club
Scottish Country Dancing: 7.30 pm, Picton Little Theatre

THURSDAY

Tai Chi: 8.00 am, Jade Lodge, 37-41 Auckland St
Union Parish Op Shop: 9.00 am – 2.00 pm, 40 Broadway
Picton Playcentre: 9.30am - Noon, 5 Waitohi Place
Mainly Music: 9.30 – 10.45 am, Picton Anglican Church
Senior Net Workshop: 10.00 am 3rd Thurs of month, Library
Table Tennis Club: 10.00 – Noon, Port Marlborough Pavilion
Grey Power: 3rd Thurs of month, 1.30 – 3.30pm, Picton RSA,
Pottery: 1.00 – 3.00pm, Essons Valley Art & Craft
Cribbage: 1.30 – 4.00 pm, Marina Cove Club Room
Aikido Children's Class: 5.00 pm, Port Marlborough Pavilion
Aikido Adult Class: 6.00 pm, Port Marlborough Pavilion
Yurt Yoga at Mount Pleasant: 6.00 – 7.30 pm, Yoga Yurt
Aikido Adult Classes: 6.00 pm, Port Marlborough Pavilion,
Sounds Orchestral Ukelele Group (S.O.U.P.): 6.30 pm, Marina Cove Club Room
Bridge Club: 6.45 pm, Union Parish Church Hall

FRIDAY

Tai Chi: 8.00 am, Jade Lodge, 37-41 Auckland St
Picton Pav Yoga: 9.15 – 10.30 am, Port Marlborough Pavilion
Picton Amateur Art Group: 10.00 am – 3.00pm, Picton RSA
Under 5's Stories & Craft: 10.30 am, Picton Library
Welcome In: 1st Fri of month, 11.00 am, Wave Café
Picton Newcomers Network: 5.00-6.00 pm, Seabeeze Café
Picton Wine Club: 6.15 pm, Picton Little Theatre, 1st Fri of the month

SATURDAY

Tai Chi: 8.00 am, Jade Lodge, 37-41 Auckland St
Junior Football, Rugby & Cricket: 9.00am onwards, Port Marlborough Pavilion
Picton Men's Shed: 9.00 am – Noon, Men's Shed
Picton Bowling Club: 12.45 pm, 25 Kent St
St. Joseph's Catholic Church: Vigil Mass 6.00 pm

SUNDAY

Tai Chi: 8.00 am, Jade Lodge, 37-41 Auckland St
Anglican (Holy Trinity) Church: Service 9.00 & 10.30 am
St. Joseph's Catholic Church: Mass 9.00 am
Union Parish of Picton: Service 10.00 am
Picton Baptist Church: Service 10.00 am
Buddhism for Daily Life (Marlborough Group): 1st Sun of month, 10.00 am, 8 Moana View Rd
Table Tennis: 10.00 am– Noon, Picton Little Theatre
Christian Life Centre: Service 11.30 am
St. John in the Wilderness Koromiko: 6.30pm (2nd & 4th Sundays of month)

For more information on any of the events listed here visit
www.pictonresource.co.nz/community-directory

If you would like to add an event to this listing or make an amendment please contact the Resource Centre on 03 573 7790 or email prcentre@xtra.co.nz.