

PICTON HAPPENINGS

www.pictonresource.co.nz

26th July 2017

28 Waitohi JAB Disco, Fri 28th July

A great way to end the first week back at school. Dress up in your favourite costume, gather your friends and family, put on your boogie shoes and come along to our disco. Gold Coin entry up to Year 10. Tuck shop will be open. 6.00 pm - 8.30 pm at Port Marlborough Pavilion, Endeavour Park, Picton.

29 Casino & Auction Night, Sat 29th July

Bevan Moody's family and friends are holding a Casino & Auction night to fundraise for the Bevan Moody Children's Trust Fund set up by the NZ Rugby Foundation. No donation, sponsorship or bidding is too small...!!! A list of all auctionable items will be provided before the night takes place to ensure you can bid on the item that takes your fancy OR if you are unable to attend you can still place your bid for that item. Dress smart casual. Tickets are available from Bayleys Picton and cost \$20 per person. Includes: Drink on arrival, nibbles throughout the night and some funny money to play with. Contact Jimmy Giles on 027 525 5548 or Di Ivamy on 021 066 4502.

31 Plunket Meeting - Have Your Say, Mon 31st July

Calling all Picton families with children under five or people with an interest in supporting families in this area. We want your thoughts and visions to help us develop a plan to further support families in your area. Join us for a cuppa, cake and a chat. There is no need to register, just come on down, you don't need to be a Plunket client. 10.30 am at Picton Library. For more information contact Sam on 021 701 413 or email Samantha.dodds@plunket.org.nz.



04 Picton School Quiz Night Fri 4th August

A quiz night with auctions and raffles at Port Marlborough Pavilion. Get your team of four to six people together, wear fancy dress and compete to become quiz masters. Tickets are \$10 per person and available from Picton School office on Buller Street or Take Note Picton. R18 event, cash bar and food for purchase. Picton School fundraiser. 6.30 pm start.

09 Picton Neighbourhood Support Meeting, Weds 9th August

Anyone interested in becoming a Neighbourhood Support Co-ordinator or interested in learning more about what this role is about, are invited to a meeting at Shirley and Colin Timms residence 6 Huia St 7.00pm. For further information ph 0276253080.

DATES FOR YOUR DIARY

6 & 8/09 Soccer Picnic Tournament
4 - 11 /09 Adult Learners Week
16/09 Queen Charlotte Relay
18/11 Lochmara Half Marathon
03/12 Christmas Parade
31/12 Ignite Marlborough
20/01 Picton Maritime Festival
TBC: Marina 2 Marina & ETNZ Picton Parade



10.00am - 1.00pm
weekdays



Mariners Mall
Picton 7220



03 573 7790



prcentre@extra.co.nz



www.pictonresource.co.nz



[www.facebook.com/
Picton-Resource-Centre](https://www.facebook.com/Picton-Resource-Centre)

PICTON DAWN CHORUS



Understanding Possums

By Siobain Browning (PDC Coordinator)

www.pictondawnchorus.nz
Email: info@pictondawnchorus.nz

Possums are often vilified and despised in New Zealand. While there is no doubt that they do not have a place in our environment and need to be removed, they are a fascinating animal that is near threatened in some areas of Australia!



Copyright Nga Manu Images

There are actually 23 species of possum in Australia – the two most common of which are the Brushtail possum and the Ringtail possum. It was the former that was first introduced in to New Zealand in 1837 in an attempt to start a fur trade. The first introductions failed but the new settlers did not give up and twenty years later the first possum population was established in Southland in 1858.

The brushtail possum (*Trichosurus vulpecular* – from Greek and Latin meaning “furry tailed little fox”) is a member of the Phalangeridae family, which includes a number of the larger possum species. They vary greatly in size around New Zealand from about 1.5 to 6kg and 65 to 95cm in length. They are largely solitary animals and have a lifespan of around 7 -10 years. The gestation period is only 16-18 days and the jelly-bean size joey climbs unassisted into the mother’s pouch where it continues to develop for 4-5 months. The young then continues to ride on the mothers back for 7-9 months. They can breed at any time of the year. Females tend to have slightly smaller home ranges than males (1.3 compared to 1.8 hectares) and on average the juveniles disperse around 5km from the maternal den.

Clearly, possums have been very successful in their breeding in New Zealand and at its highest the population was thought to be 50-70 million possums in the 1980s. The current population estimate is around 30 million. Unsurprisingly, this large possum population has a huge impact on our native flora and fauna. “Possums eat about 21,000 tonnes of leaves and flowers in just one night. That’s a lot of forest disappearing while you sleep.”

A lot of people have recently purchased Goodnature possum traps and your efforts to control possums around your property are an important part of trying to protect our native bush and its inhabitants. A few tips around using your possum trap:

Find the rights tree: The right trapping tree has a straight trunk, which is clear of branches below the trap (plus no shrubs at the base); its diameter should be between 15-30cm (between a bread plate and a large dinner plate across).

Look after the lure: Fresh lure is vital and bit of extra lure on the tree below the trap will be an extra attraction.

Keep the trap armed: Replace both the CO² canister and lure bottle every 6 months regardless of the number of kills.

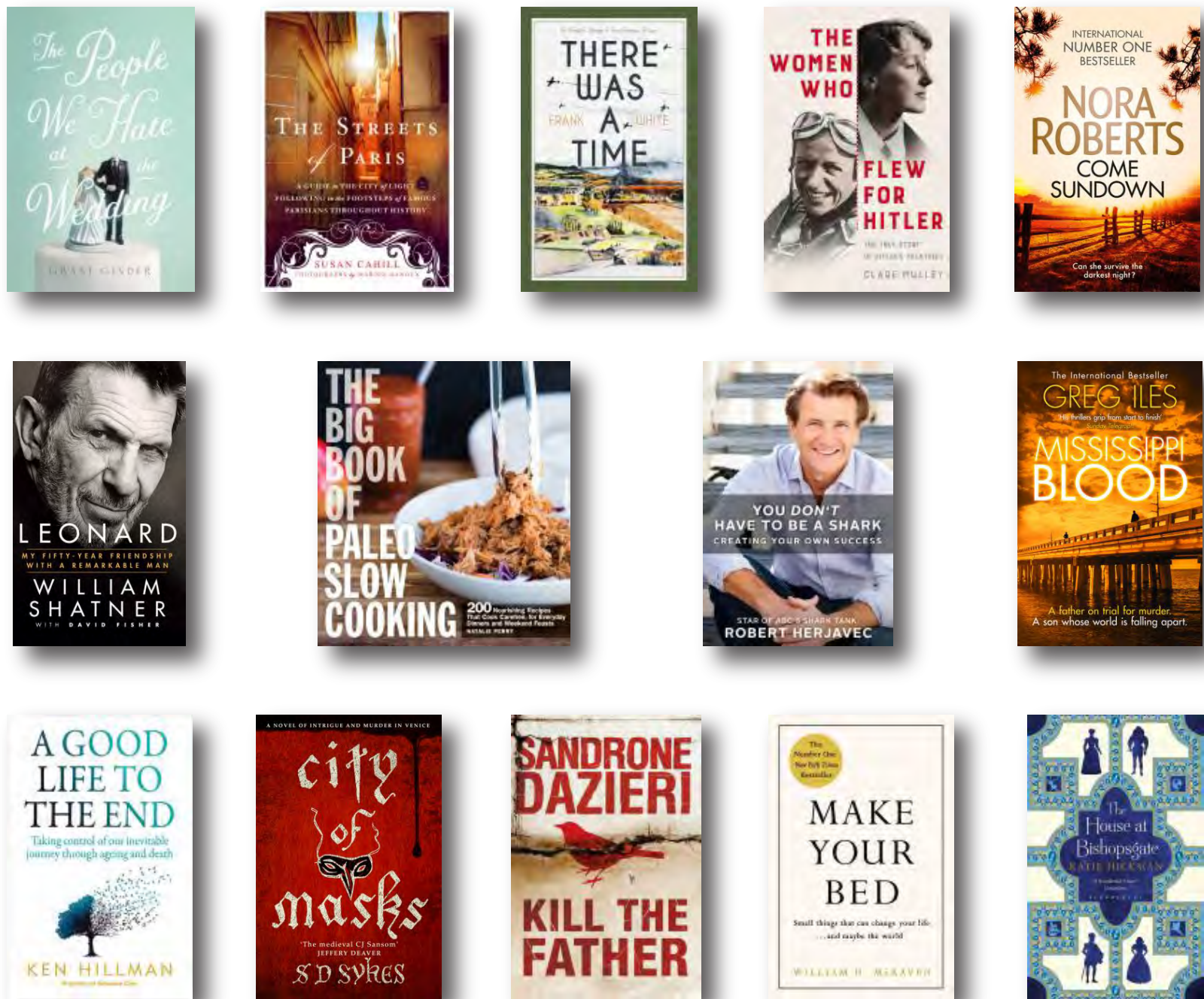
And also very importantly.....don’t forget to tell us about your success on our website www.pictondawnchorus.nz under Submit Urban Data.



Copyright Nga Manu Images

By Helen Devlin

Snuggle in books for cool winter days



Winter Reading Programme was a blast!

The Winter Warmers Reading Programme “Polar Blast” really did go off with a blast and has kept the Library very busy through the school holidays. Lots of children and carers have been spending time in the library enjoying doing the daily DIY crafts, and keeping up with the reading challenge. Overall there have been 113 reading challenge cards given out. There were 305 individual crafts completed and 21 happy penguin watchers at the two movie afternoons. There was also a competition to guess how many milk jugs are in the igloo, not yet drawn as the igloo made it to the end of the holidays in one piece!

What’s on?

Tuesdays	10.30am	Picton Spinners and Knitters
Friday 28th July	10.30 am	Under 5’s Story and Craft
Wednesday 9th August	10.30am	BookChat

Picton Library and Council Service Centre
67 High Street, Picton
Tel: 03 520 7493, Fax: 03 578 2783
Email: pictonlibrary@marlborough.govt.nz

Opening Hours	
Monday to Friday	8.00 am to 5.00 pm
Saturday	10.00 am to 1.00 pm
Sunday	1.30 pm to 4.30 pm

TrustPower Community Awards

TrustPower, in partnership with the Marlborough District Council, wishes to recognise voluntary organisations that dedicate hours of voluntary time and energy every year to making the Marlborough District community a better place to live.

The awards are intended to support and recognise the valuable contribution these organisations and groups make to the Marlborough District.

Nominations are now open under the following categories:

- Heritage & Environment
- Health & Wellbeing
- Arts & Culture
- Sport & Leisure
- Educational & Child Youth Development



Entry forms, along with details of eligibility and criteria are available at Council offices, the library and on Council's website <https://www.marlborough.govt.nz/our-community/grants-and-awards/trustpower-community-awards>

Closing date for nominations is **11 August 2017**.

Youth Civic Awards

The Marlborough Youth Civic Awards are now open for nominations of any young person who has carried out deserving voluntary service in the Marlborough district which is beneficial to other residents of the district.

The Youth Civic Awards are awarded to Marlborough youth aged 13 to 20 years. The service needs to have taken place since the 2015 Youth Civic Awards. The service must be in the community and for which payment is not received.

The areas of service to consider for the Civic Awards are:

- Community service/spirit
- Sport and recreation
- Art and culture
- Environment
- Leadership
- Mentoring

Note: deserving nominees may have undertaken service in one or more than one of these areas.

Nominations close on **31 August 2017**. A sub committee will be responsible for selecting the award recipients and an Award function will take place in September. To make a nomination please go to: <https://www.marlborough.govt.nz/our-community/grants-and-awards/youth-civic-awards/2017-youth-civic-awards>.

Latest stage of Endeavour Park development

Marlborough Mayor John Leggett and former Silver Ferns netballer Leana de Bruin did the honours at the official opening of the two new courts at Picton's Endeavour Park.

Picton's Tokomaru Netball Club members, supporters and sponsors turned out for the celebration.

The courts are the latest addition to the Endeavour Park multisport centre which is also a venue for community events and conferences.



Declaring the courts open, Mayor Leggett thanked the Endeavour Park Pavilion Committee for its big contribution to the development of the recreation amenities for Picton and Waikawa.

Waitohi Rugby Club

By Sam Swain



Waitohi Rugby results (8th July 2017)

The **Crafar Crouch Waitohi Premier** having secured a semi final berth against Renwick had one final task, to win back the Challenge Trophy which they had lost to Moutere earlier in the season after holding it for nearly 12 months. Although not at full strength on their day this Waitohi team is the better of most teams in Marlborough and this game was always going to be the most likely contenders for the 2017 Marlborough final in two weeks time. In the end Waitohi proved too strong winning 44 – 33, Waitohi's points coming from five tries, Taimi Fangatua, Taraiasi Wara, and Filipo Lialiga touching once each and Chris Tau'alupe scoring two, Tim O'Malley converting all five tries and kicking three penalties for a tally of 19 points. So it will be Lansdowne Park next week in a game that could go either way.



Under 9s eating there Waitohi black and yellow cupcakes celebrating their win!!

KAM Transport Waitohi Under 14 were scheduled to play Motueka High School, a team that they had put away earlier in the season, as has happened too much this season Nelson based teams choose to default rather than travel for a loss to play in Marlborough, Waitohi come away with the points and remain top of the table and unbeaten. **Fresh Choice Waitohi Under 12** had a bye.

Coventry Cars Waitohi Under 10 played Moutere White a very "explosive" game with some glimpses of brilliance from each team. Waitohi were pipped at the post in the last minute of the game. 12-11 to Moutere. The **Hitec Automotive Waitohi Under 9** team played Renwick at Renwick and came away with a win, Ocean scoring 3 tries, Ryan and Harlem scoring two tries each and Bonnie (who was player of the day) also scoring a try. **Picton Motordrome Waitohi Under 8s** team beat Moutere 12 tries to 8, players of the day were Noah, Sofia and Izak. The **Merv Scott Decorating Waitohi Under 7** team played Moutere, three tries were scored by Noah Cookson whilst two were scored by Livvy Giles, Jaxon Watty, Lee Taiapa and Andrew Kubis and Izaac Hebbard scoring as well. The **Picton Sportsworld Waitohi Under 6** played away to Harlequins at Lansdowne Park.

Waitohi Rugby results (15th July 2017)

With school holidays in full swing, the only game involving the locals was **Crafar Crouch Waitohi Premier** in the semi final against Renwick at Lansdowne Park. A good crowd had gathered and hopes were high despite the head to head being one game each.

Waitohi started well playing most of the first quarter in the Renwick half, the pressure telling on the Green Machine forcing illegal play and allowing Tim O'Malley to kick two early penalties to give Tohi a 6-0 lead.

A try against the run of play allowed Renwick to briefly take a slight lead (7-6), almost immediately the Picton team struck back when pressure forced Renwick to throw a bad pass that was swooped on by speedy wing Taraiasa Wara to score the first of his tries for Waitohi's, the try was converted by Tim to make the lead 13-7. Renwick struck just before the break to regain the lead 14-13.

Waitohi started the second half strongly with Wara scoring his second try of the semi final and Tim converted it to take Waitohi to a 20-14 lead, Renwick scored another try but was unable to convert it and Waitohi held a 20-19 lead. From here the game ebbed and flowed and Renwick managed a penalty to sneak the lead back 22-20.



Cont....

Again against the run of play Renwick scored another try that was converted to give them a 9 point advantage, Waitohi were now in a position where it was unlikely that penalties would win the game and Renwick aware of this pushed the envelope with the ref giving away multiple penalties but eventually they went too far when their wing committed his second foul taking a player in the air penalty and was shown a yellow card.



This looked like a turning point when shortly after Filipo Lugaliga crossed the line unopposed but dropped the ball cold, had the try been scored the lead would have been 2 points and the endless run of penalties Renwick were giving away in kickable positions would have stopped or have resulted in Tim O'Malley closing the game out. But having the 9 point buffer allowed Renwick to hold on.

This is what Finals Football is all about, it has been a tough year for Waitohi but the boys have held on and done the town proud, Kia Kaha.



1ST AID

course at Picton Fire Station on **Friday 28th July**. Starts 8.30am.

Visa/Mastercard accepted.
(Rural subsidies available)

NZQA rated, renew or full first aid at work courses. Fun & fast.
Call Nine Scott on 0800 9347837 or email
nine@tripleonecare.co.nz



PICTON HERITAGE & WHALING MUSEUM



Special prices for rest
home groups

9 London Quay, Picton
Opening hours 10 am to 4 pm daily

PICTON'S GREEN SCENE

Tip: Remember it's Plastic Bag Free July everyone and make that extra effort to take those reusable bags to the supermarket, and say no to the plastic ones. If you forget just wheel that plastic bag free trolley out to the car and throw those groceries in the boot.

Would you like to contribute?

Email Linda your tips for a sustainable lifestyle to plasticbagfreepicton@gmail.com.

Brought to you by Linda
Thompson of Plastic Bag
Free Picton and Picton Smart
& Connected Environment
working group.



ADULT LEARNERS WEEK

4th - 10th September 2017

Free workshops in Picton

Pottery

Part 1 - Make a plate & mug
Mon 4th Sept 1.00 - 3.00 pm
Part 2 - Decorate plate & mug
Fri 8th Sept 1.00 - 3.00 pm
Location: Essons Valley Gallery
Tutor: Sara Scott

Wananga Heritage Visit

Learn the rich history of the
Marae. The customs & protocols.
Tues 5th Sept
10.00 - Noon
Location: Waikawa Marae
Tutor: Marae Representative

Introduction to Smart Phones

Tues 5th Sept
10.00 - Noon
Location: Picton Library
Tutor: Rosemary Coyle
Bring your own Smart Phone

'P' Methamphetamine

Drug awareness seminar. Be
aware of this insidious drug
in our community.
Tues 5th Sept
12.30 - 1.45 pm
Location: Waikawa Marae
Tutor: Russell Smith (NZ Police)

Introduction to Social Media

Tues 5th Sept
1.00 - 3.00 pm
Location: Picton Library
Tutor: Rosemary Coyle
Bring your own device

Wairaku Rongoa

Be shown native plants that
have healing properties &
how to use them.
Tues 5th Sept
2.00 - 3.15 pm
Location: Waikawa Marae
Tutor: Reggie Collins

Pounamu Talk

A display & presentation by
Ross Johns, master carver.
Tues 5th Sept
3.30 - 4.45 pm
Location: Waikawa Marae
Tutor: Ross Johns

Introduction to Flax Weaving

Learn to weave a basic
flax flower
Weds 6th Sept
1.00 - 3.00 pm
Location: Picton Library
Tutor: Bev Mataahart

Introduction to Reflexology

What is Reflexology, it's history
and how it can help you. Plus a
short practical of headache relief
on the hands.
Thurs 7th Sept 10.00 - Noon
Location: Picton Library
Tutor: Kate Fillenham

Booking is essential as places are limited. Contact the Picton Resource Centre on
03 573 7790 or email prcentre@xtra.co.nz to secure your place or ask for more information.



Volunteer in Picton



Alzheimers Marlborough Day Programme: Picton

Do you have a pleasant manner, patience, dependability, sense of humour and an empathy with people?
We have shifts available either morning or afternoon on a Friday at our Picton Forget-Me-Not-Club.
If you are interested in volunteering we would love to hear from you.

Contact us Alzheimers Marlborough 5776172



This work is supported by the faithful giving of volunteers, -TERRACONTOURTS

St John PICTON needs MORE Ambulance Volunteers



St John Picton urgently needs Ambulance Volunteers to help provide emergency Ambulance Services locally.

Volunteers work as part of a dedicated team and receive full training, uniform and on-going support.

If you have time to give to your community and are interested in becoming a St John Volunteer, contact:

Anne Parker 03 578 0797 or
anne.parker@stjohn.org.nz



New Zealand Red Cross Response Teams Volunteer Now!



Could you help when it counts?

MEDICAL RESPONSE | LIGHT RESCUE | WELFARE SUPPORT

AREA: Marlborough

TELEPHONE

For more information get in touch:

TELEPHONE 03 5786134

EMAIL Donna.mote@redcross.org.nz

0800 733 276 | www.redcross.org.nz



Picton Dawn Chorus is dedicated to eliminating predators from the Picton-Waikawa area.



They are looking for support from all the community, with a trap in every fifth section in town and similar spacings in the bush. They need your help; you could become a member, a donor, a trap purchaser and/or a volunteer.

If you wish to become a volunteer please contact Picton Dawn Chorus for a friendly chat about what this involves.

Donation forms can be collected at the Picton Resource Centre in Mariners Mall.

Tel: 03 573 6334

P.O. Box 506, Picton

Email: pictondawnchorus@gmail.com

www.pictondawnchorus.nz



Welcome to IHC New Zealand
IHC will advocate for the rights, inclusion and welfare of all people with intellectual disabilities and support them to live satisfying lives in the community.

VOLUNTEERING

Play a big part in the life of a person with an intellectual disability and the work IHC does by joining our One-to-One Friendship or Skills-based Volunteer Programmes.



We are currently looking for volunteers in the **Picton** area. If you are interested in volunteering please call Jane on 027 836 0342 or go to www.ihc.org.nz/volunteer to register your interest and a volunteer coordinator in your area will get back to you.

"What you give as a volunteer you get back. It makes a big difference to your friend's life, you share the enjoyment and have lot of fun along the way," Margaret, Blenheim



GOOD NEIGHBOURS, STRONG COMMUNITIES

JOIN THE NEIGHBOURHOOD SUPPORT

Volunteers wanted to be coordinators in Picton and Waikawa for Neighbourhood Support Group. Anyone interested please contact Shirley Timms.

EMAIL: pearlyshells007@gmail.com

MOBILE: 027 625 3080

WEBSITE: www.facebook.com/shirley.timms.7

Neighbourhood Support aims to make our homes, streets, neighbourhoods and communities safer and more caring places in which to live.

www.ns.org.nz



PICTON HERITAGE & WHALING MUSEUM

would like to have more volunteers
1 session of 3 hours per month

HELP TO PRESENT OUR HISTORY

Phone 573 8283 or call in at 9 London Quay



PICTON
Resource Centre Inc.

Are looking for volunteers for your organisation? Ask at the Picton Resource Centre for more information on how we can help.

T: 03 573 7790

E: prcentre@xtra.co.nz
www.pictonresource.co.nz/volunteers



Volunteer Today

We are looking for volunteers to help one day a week at our new Totara Day Programme in Picton. If you are interested in assisting or have experience with older people you're just who we're looking for.



Please contact Loreto on 03 577 9005

**Volunteers
Needed!**



Picton Rail and Sail are in need of more volunteers. 2017 sees the facility turn 50 but more help is needed to reach this milestone.

For more information contact Russell Mathews on 573 8553 or Graham Low on 573 6356.

PICTON WEEKLY EVENTS

MONDAY

Tai Chi: 8.00 am, Jade Lodge, 37-41 Auckland St
Picton Walking Group: 9.30 am, Picton RSA carpark
Tumble Tots: 10.30 am, Port Marlborough Pavilion
Writers of Picton: 11.30 am, 1st Mon of month, Picton Library
Senior Citizens: 1.00 pm onwards, Picton RSA
Junior Badminton: 3.15 – 4.30 pm onwards, QCC Gym
Arapawa Boxing Club: 5.30 – 6.15 pm, Picton Scout Hall
Girl Guides: 6.00 – 8.00 pm, St. Josephs School
Picton Pav Yoga: 6.00 – 7.30 pm, Port Marlborough Pavilion
Sounds Accordionaires: 7.00 – 8.30 pm, 62 Moana View

TUESDAY

Tai Chi: 8.00 am, Jade Lodge, 37 - 41 Auckland St
St. Joseph's Catholic Church: Mass 9.00 am
Picton Playcentre: 9.30am - Noon, 5 Waitohi Place
Picton Newcomers Network: 1st & 3rd Tues of month 10.00 - 11.30 am, Seabreeze Café
Table Tennis: 10.00 am– Noon, Picton Little Theatre
Spinners and Knitters: 10.30 am, Picton Library
Picton Women's Institute: 1st Tues of month, 12.00 – 3.00 pm, Anglican Church Hall
Tasty Cooking Club: 3.30 – 4.30 pm, Picton Library
Aikido Adult Classes: 6.00 pm, Port Marlborough Pavilion
Picton Yoga With Kate: 6.00 – 7.00 pm, 32 Waimarama St
Housie: 7.00 pm, Picton RSA
Senior Badminton: 7.00 pm onwards, QCC Gym

WEDNESDAY

Tai Chi: 8.00 am, Jade Lodge, 37-41 Auckland St
St. Joseph's Catholic Church: Mass 9.00 am
Picton Men's Shed: 9.00 am – 4.00 pm, Men's Shed
Anglican (Holy Trinity) Church: Service 10.00 am, 38 York St
Weightwatchers: 10.00 am, St Joseph's School
QC Fellowship Club: 2nd Weds of month, 10.00 am, Port Marlborough Pavilion
Picton Poets: 3rd Weds of month, 10.30 am, Picton Library
Picton Bowling Club: 12.45 pm, 25 Kent Street
Arapawa Boxing Club: 5.30 – 6.15 pm, Picton Scout Hall
Dance Fit: 6.00 – 7.00 pm, Port Marlborough Pavilion
Picton Lions (Tea): 6.30 pm, The Barn, 1st Weds of the month
Picton Lions (Committee): 6.30 pm, Port Marlborough Pavilion, 3rd Weds of the month
Konga: 6.30 pm, Picton School Hall
Euchre: 6.30 pm, Mikeys Bar
Indoor Bowls: 7.00 pm, Port Marlborough Pavilion
Quiz Nights: 7.30 pm, Picton RSA & Club
Scottish Country Dancing: 7.30 pm, Picton Little Theatre

THURSDAY

Tai Chi: 8.00 am, Jade Lodge, 37-41 Auckland St
Union Parish Op Shop: 9.00 am – 2.00 pm, 40 Broadway
Picton Playcentre: 9.30am - Noon, 5 Waitohi Place
Mainly Music: 9.30 – 10.45 am, Picton Anglican Church
Senior Net Workshop: 10.00 am 3rd Thurs of month, Library
Table Tennis Club: 10.00 – Noon, Port Marlborough Pavilion
Grey Power: 3rd Thurs of month, 1.30 – 3.30pm, Picton RSA,
Pottery: 1.00 – 3.00pm, Essons Valley Art & Craft
Cribbage: 1.30 – 4.00 pm, Marina Cove Club Room
Aikido Children's Class: 5.00 pm, Port Marlborough Pavilion
Aikido Adult Class: 6.00 pm, Port Marlborough Pavilion
Yurt Yoga at Mount Pleasant: 6.00 – 7.30 pm, Yoga Yurt
Aikido Adult Classes: 6.00 pm, Port Marlborough Pavilion,
Sounds Orchestral Ukelele Group (S.O.U.P.): 6.30 pm, Marina Cove Club Room
Bridge Club: 6.45 pm, Union Parish Church Hall

FRIDAY

Tai Chi: 8.00 am, Jade Lodge, 37-41 Auckland St
Picton Pav Yoga: 9.15 – 10.30 am, Port Marlborough Pavilion
Picton Amateur Art Group: 10.00 am – 3.00pm, Picton RSA
Under 5's Stories & Craft: 10.30 am, Picton Library
Welcome In: 1st Fri of month, 11.00 am, Wave Café
Picton Newcomers Network: 5.00-6.00 pm, Seabeeze Café
Picton Wine Club: 6.15 pm, Picton Little Theatre, 1st Fri of the month

SATURDAY

Tai Chi: 8.00 am, Jade Lodge, 37-41 Auckland St
Junior Football, Rugby & Cricket: 9.00am onwards, Port Marlborough Pavilion
Picton Men's Shed: 9.00 am – Noon, Men's Shed
Picton Bowling Club: 12.45 pm, 25 Kent St
St. Joseph's Catholic Church: Vigil Mass 6.00 pm

SUNDAY

Tai Chi: 8.00 am, Jade Lodge, 37-41 Auckland St
Anglican (Holy Trinity) Church: Service 9.00 & 10.30 am
St. Joseph's Catholic Church: Mass 9.00 am
Union Parish of Picton: Service 10.00 am
Picton Baptist Church: Service 10.00 am
Buddhism for Daily Life (Marlborough Group): 1st Sun of month, 10.00 am, 8 Moana View Rd
Christian Life Centre: Service 11.30 am
St. John in the Wilderness Koromiko: 6.30pm (2nd & 4th Sundays of month)

For more information on any of the events listed here visit
www.pictonresource.co.nz/community-directory

If you would like to add an event to this listing or make an amendment please contact the Resource Centre on 03 573 7790 or email prcentre@xtra.co.nz.